



RUBBER FLOORING

RUBBER FLOORING

Rubber flooring in general

Rubber floors are naturally flexible and can withstand high walking loads and are also resistant to water and moisture. The rubber is typically non-conductive and absorbs vibrations well. They are great for shock absorption and are therefore popular in hockey stadiums, on shelves, gym areas, etc. Walking on the floor counteracts fatigue.

Applications

- Interior and exterior floors
- Pads for heavy metal objects
- Floors in hockey stadiums and fitness centers
- For car workshops with oil
- Shelf protection pads
- Floors for pets

Available features - general properties (anti-slip, vibration damping, flexibility, durability, easy maintenance), flame retardant, oil resistant, resistance to high temperatures and UV radiation, increased abrasion resistance.

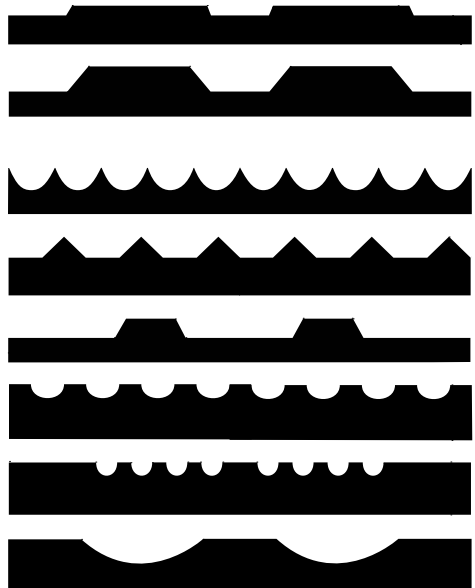
Available in various thicknesses and harnesses.
Packed in 10m rolls.

AVAILABLE COLORS



AVAILABLE PROFILES

Pattern S8, Pattern S4, Pattern S3, Pattern S7, Pattern S6, Pattern S5, Pattern S2, Pattern S1



The bottom side has always a textile imprint, which ensures a better adhesion to the surfaces.

AVAILABLE APPLICATIONS

GENERAL USE

Flooring for non-aggressive interior environments. The hardness of the standard version is 80 Shore, which means high dimensional and dimensional stability and resistance to mechanical damage. Made of SBR and NR rubbers.

OIL RESISTANT

Flooring for indoor environments, in which the floor regularly comes into contact with mineral oils (NBR45 series) and gasoline, resp. isooctanes (higher NBR72 series). Made of NBR synthetic rubbers.

HEAT RESISTANT

Interior and exterior flooring, resistant to high temperatures, weathering, UV radiation, acid and alkalis. In hardness 80 Sh A (EPDM96 series), 70 Sh A (EPDM95 series) and 60 Sh A (EPDM15 series). Made of synthetic EPDM rubbers.

FLAME RETARDANT

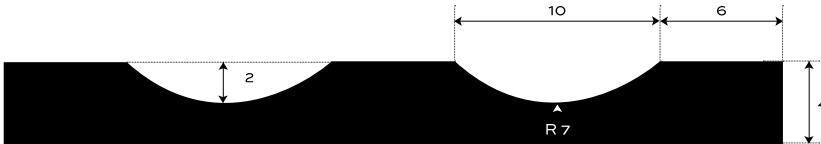
Tile in the classic money pattern S-8. Suitable for environments where there is a higher risk of fire. According to the EN13501 standard, it is classified as a non-flammable building material in class C_s-s1.

| | |
|---------------------------|----|
| S1 — SBR-COLOR | 4 |
| S1 — SBR-BLACK | 5 |
| S1 — NBR72 | 6 |
| S1 — NBR45 | 8 |
| S1 — EPDM96 | 10 |
| S1 — EPDM95 | 11 |
| S1 — EPDM15 | 12 |
| S2 — SBR-COLOR | 13 |
| S2 — SBR-BLACK | 14 |
| S2 — NBR72 | 15 |
| S2 — NBR45 | 17 |
| S2 — EPDM96 | 19 |
| S2 — EPDM95 | 20 |
| S2 — EPDM15 | 21 |
| S3 — SBR-BLACK | 22 |
| S4 — SBR76 | 23 |
| S4 — SBR+ Flame retardant | 24 |
| S4 — SBR-COLOR | 25 |
| S4 — SBR-BLACK | 26 |
| S4 — NBR72 | 27 |
| S4 — NBR45 | 29 |
| S4 — EPDM96 | 31 |
| S4 — EPDM95 | 32 |
| S4 — EPDM15 | 33 |
| S5 — SBR-COLOR | 34 |
| S5 — SBR-BLACK | 35 |
| S5 — NBR72 | 36 |
| S5 — NBR45 | 38 |
| S5 — EPDM96 | 40 |
| S5 — EPDM95 | 41 |
| S5 — EPDM15 | 42 |
| S6 — SBR-COLOR | 43 |
| S6 — SBR-BLACK | 44 |
| S6 — NBR72 | 45 |
| S6 — NBR45 | 47 |
| S6 — EPDM96 | 49 |
| S6 — EPDM95 | 50 |
| S6 — EPDM15 | 51 |
| S7 — SBR-COLOR | 52 |
| S7 — SBR-BLACK | 53 |
| S7 — NBR72 | 54 |
| S7 — NBR45 | 56 |
| S7 — EPDM96 | 58 |
| S7 — EPDM95 | 59 |
| S7 — EPDM15 | 60 |
| S8 — CB | 61 |
| S8 — SBR-COLOR | 62 |
| S8 — SBR-BLACK | 63 |
| S8 — NBR72 | 64 |
| S8 — NBR45 | 66 |
| S8 — EPDM96 | 68 |
| S8 — EPDM95 | 69 |
| S8 — EPDM15 | 70 |
| S8 — SBR+ Flame retardant | 71 |

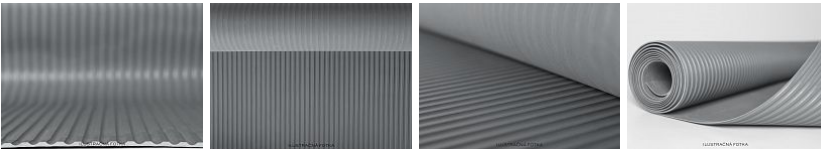
RUBBER FLOORING WIDE RIBBED — S1- SBR-COLOR



| | | | |
|--------------------|----------------------|------------------|---------------------------------|
| INTERIOR | 80 +/- 5 Sh A | 4 mm | 4.5-4.8 kg/m² |
| ENVIRONMENT | HARDNESS | THICKNESS | BASIS WEIGHT |



Bottom side - cloth impression



ADDITIONAL INFORMATION

Temperature range -25/+80 °C

RESISTANCE

| | |
|---------------------|----|
| Weather resistance | NO |
| Ozone resistance | NO |
| UV resistance | NO |
| Alkaline resistance | NO |
| Acid resistance | NO |
| Oil resistance | NO |
| Gasoline resistance | NO |

Rubber roofing for interior surfaces. Durable and low maintenance with easy handling. In a wide grooved design of the S1 type, in the basic design in three colors: gray, blue and green. In standard thickness of 4 mm. It weighs 4.8 kg / m². Finish your specification in configurator.

CONFIGURATION OPTIONS

THICKNESS

4 mm (+/- 0,3 mm)

WIDTH

1200 mm (+/- 10 mm)

1000 mm (+/- 10 mm)

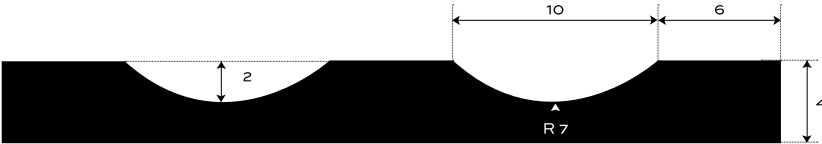
LENGTH

10 m (+/- 200 mm)

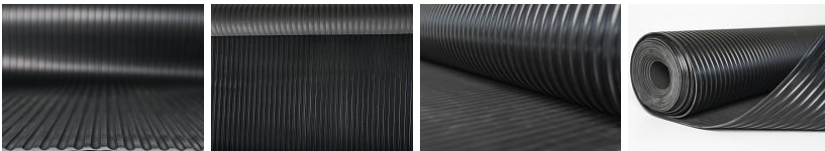
RUBBER FLOORING WIDE RIBBED — S1-SBR-STD



| | | | |
|-----------------------------|----------------------|------------------|-----------------------------|
| INTERIOR ENVIRONMENT | 80 +/- 5 Sh A | 4 mm | 4.7 kg/m² |
| | HARDNESS | THICKNESS | BASIS WEIGHT |



Bottom side - cloth impression



ADDITIONAL INFORMATION

Temperature range -25/+80 °C

RESISTANCE

- Weather resistance NO
- Ozone resistance NO
- UV resistance NO
- Alkaline resistance NO
- Acid resistance NO
- Oil resistance NO
- Gasoline resistance NO

Rubber roofing for interior surfaces. Durable and low maintenance with easy handling. In a wide ribbed pattern type S1, in the basic design in black. In standard thickness 4 mm. It weighs 4.8 kg / m². Specify in the configurator.

CONFIGURATION OPTIONS

THICKNESS

4 mm (+/- 0,3 mm)

WIDTH

1200 mm (+/- 10 mm)

1000 mm (+/- 10 mm)

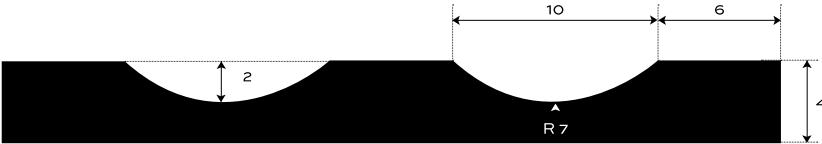
LENGTH

10 m (+/- 200 mm)

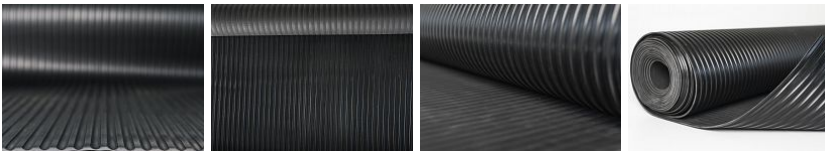
RUBBER FLOORING WIDE RIBBED OIL RESISTANT - S1-NBR72



| | | | |
|-----------------------------|----------------------|------------------|-----------------------------|
| INTERIOR ENVIRONMENT | 70 +/- 5 Sh A | 4 mm | 3.8 kg/m² |
| | HARDNESS | THICKNESS | BASIS WEIGHT |



Bottom side - cloth impression



ADDITIONAL INFORMATION

Temperature range -25/+80 °C, short-term +90 °C.

RESISTANCE

| | |
|----------------------------|------------------|
| Alkaline resistance | NO |
| Acid resistance | MEDIUM RESISTANT |
| Transformer oil resistance | HIGHLY RESISTANT |
| Oil resistance | HIGHLY RESISTANT |
| Gasoline resistance | HIGHLY RESISTANT |

Rubber roofing for interior surfaces. Durable and low maintenance with easy handling. In a wide grooved pattern of the S1 type, oil-resistant in black. In standard thickness 4 mm. It weighs 3.6 kg / m². Specify in the configurator.

CONFIGURATION OPTIONS

THICKNESS

4 mm (+/- 0,3 mm)

WIDTH

1200 mm (+/- 10 mm)

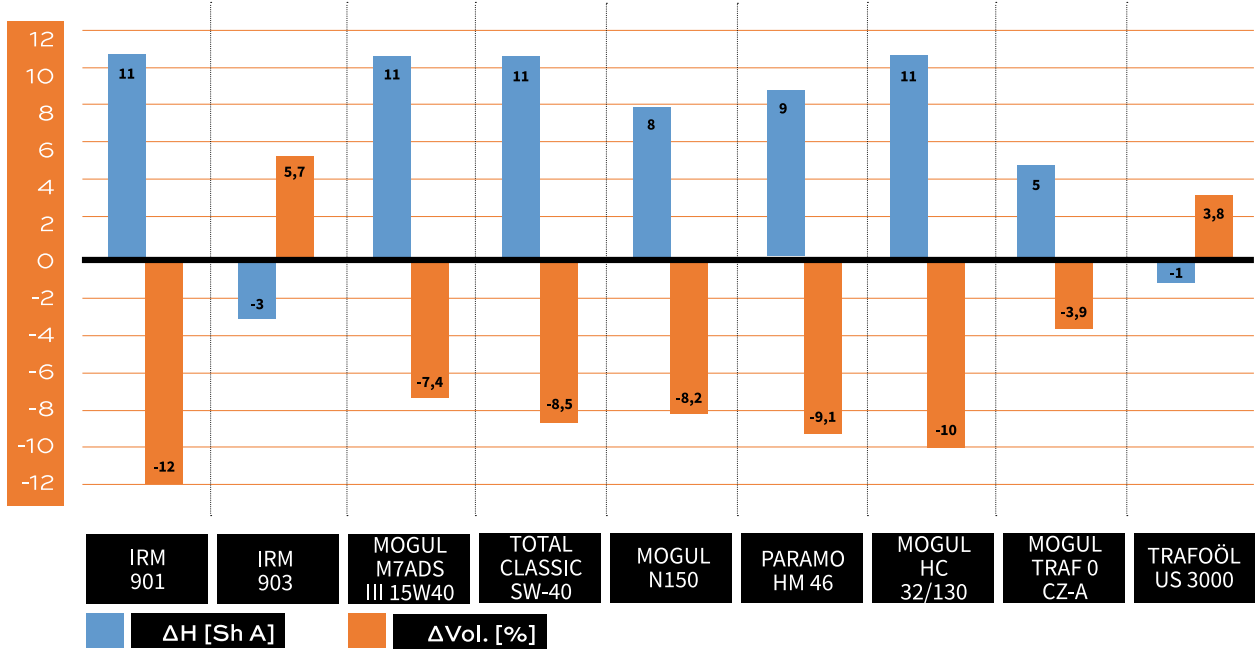
1000 mm (+/- 10 mm)

LENGTH

10 m (+/- 200 mm)

RUBBER FLOORING WIDE RIBBED OIL RESISTANT - S1-NBR72

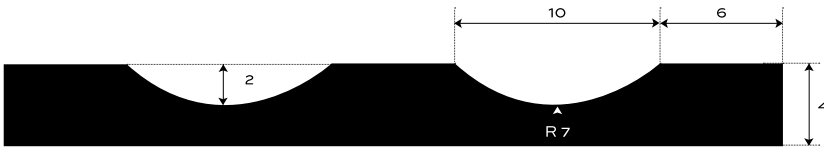
7672 SWELLING RATES



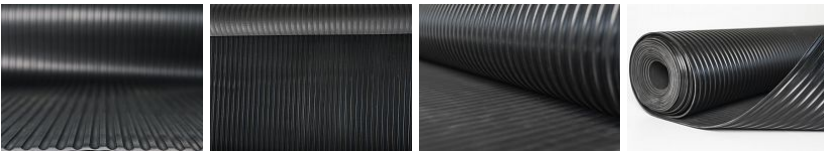
RUBBER FLOORING WIDE RIBBED OIL-RESISTANT - S1-NBR45



| | | | |
|-----------------------------|----------------------|------------------|-----------------------------|
| INTERIOR ENVIRONMENT | 65 +/- 5 Sh A | 4 mm | 4.9 kg/m² |
| | HARDNESS | THICKNESS | BASIS WEIGHT |



Bottom side - cloth impression



ADDITIONAL INFORMATION

Temperature range -25/+80 °C, short-term +90 °C.

RESISTANCE

- Alkaline resistance NO
- Acid resistance NO
- Oil resistance HIGHLY RESISTANT
- Gasoline resistance MEDIUM RESISTANT

Rubber roofing for interior surfaces. Durable and low maintenance with easy handling. In a wide grooved pattern of the S1 type, oil-resistant in black. In standard thickness 4 mm. It weighs 4.8 kg / m². Specify in the configurator.

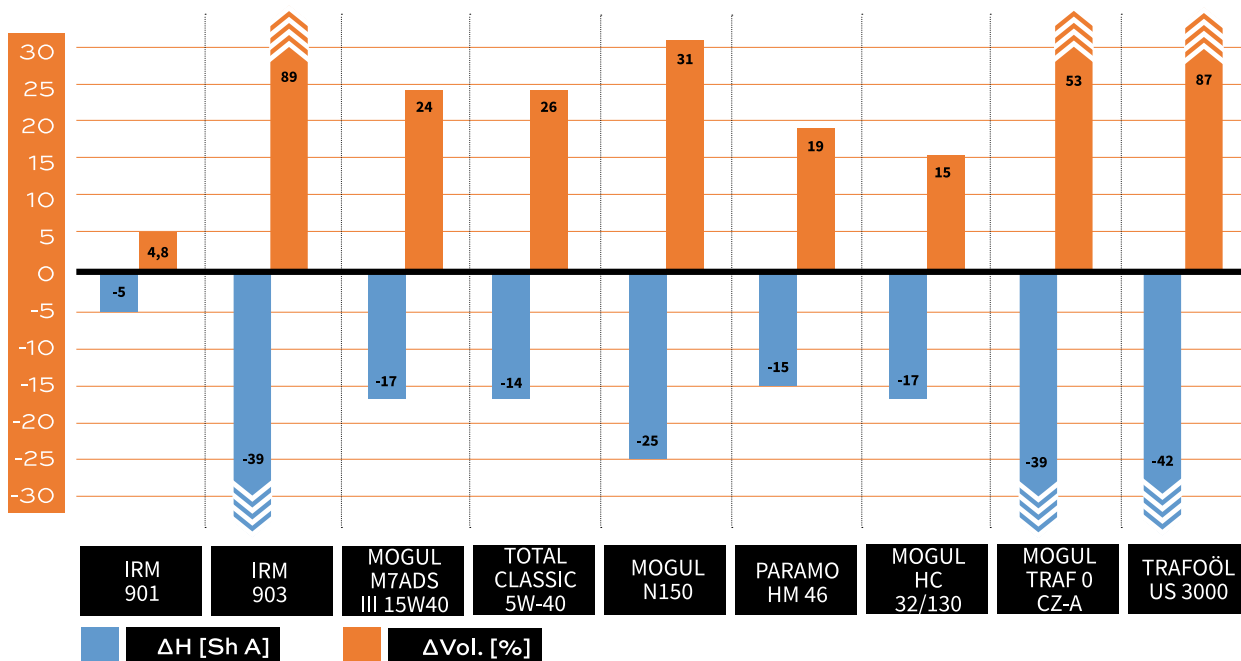
CONFIGURATION OPTIONS

| THICKNESS | |
|-----------|--------------|
| 4 mm | (+/- 0,3 mm) |
| WIDTH | |
| 1200 mm | (+/- 10 mm) |
| 1000 mm | (+/- 10 mm) |
| LENGTH | |
| 10 m | (+/- 200 mm) |

S1 — NBR45

RUBBER FLOORING WIDE RIBBED OIL-RESISTANT - S1-NBR45

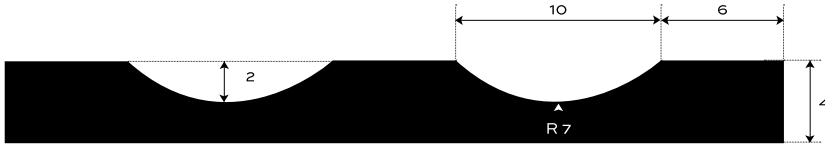
7645 SWELLING RATES



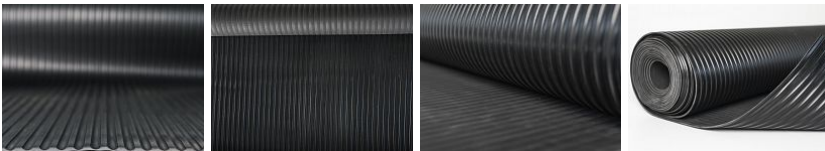
RUBBER FLOORING WIDE RIBBED — S1-EPDM96



| | | | |
|-----------------------------|----------------------|------------------|-----------------------------|
| EXTERIOR ENVIRONMENT | 80 +/- 5 Sh A | 4 mm | 3.8 kg/m² |
| | HARDNESS | THICKNESS | BASIS WEIGHT |



Bottom side - cloth impression



ADDITIONAL INFORMATION

Temperature range -40/+100 °C.

RESISTANCE

| | |
|---------------------|------------------|
| Weather resistance | HIGHLY RESISTANT |
| Ozone resistance | HIGHLY RESISTANT |
| UV resistance | HIGHLY RESISTANT |
| Alkaline resistance | HIGHLY RESISTANT |
| Acid resistance | HIGHLY RESISTANT |
| Oil resistance | NO |
| Gasoline resistance | NO |

Rubber roofing for interior and exterior surfaces. Durable and easy to maintain with easy handling. In a wide ribbed pattern type S1, heat-resistant in black. In standard thickness 4 mm. It weighs 3.6 kg / m². Specify in the configurator.

CONFIGURATION OPTIONS

THICKNESS

4 mm (+/- 0,3 mm)

WIDTH

1200 mm (+/- 10 mm)

1000 mm (+/- 10 mm)

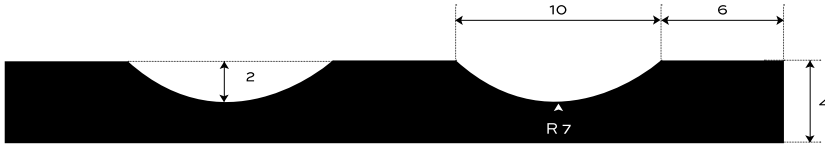
LENGTH

10 m (+/- 200 mm)

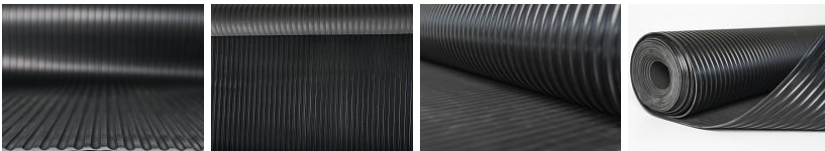
RUBBER FLOORING WIDE RIBBED — S1-EPDM95



| | | | |
|-----------------------------|----------------------|------------------|---------------------------------|
| EXTERIOR ENVIRONMENT | 70 +/- 5 Sh A | 4-5 mm | 3.8-4.8 kg/m² |
| | HARDNESS | THICKNESS | BASIS WEIGHT |



Bottom side - cloth impression



ADDITIONAL INFORMATION

Temperature range -40/+100 °C.

RESISTANCE

| | |
|---------------------|------------------|
| Weather resistance | HIGHLY RESISTANT |
| Ozone resistance | HIGHLY RESISTANT |
| UV resistance | HIGHLY RESISTANT |
| Alkaline resistance | HIGHLY RESISTANT |
| Acid resistance | HIGHLY RESISTANT |
| Oil resistance | NO |
| Gasoline resistance | NO |

Rubber roofing for interior and exterior surfaces. Durable and easy to maintain with easy handling. In a wide ribbed pattern type S1, heat-resistant in black. In standard thickness 4 mm. It weighs 3.6 kg / m². Specify in the configurator.

CONFIGURATION OPTIONS

THICKNESS

4 mm (+/- 0,3 mm)

5 mm (+/- 0,3 mm)

WIDTH

1200 mm (+/- 10 mm)

1000 mm (+/- 10 mm)

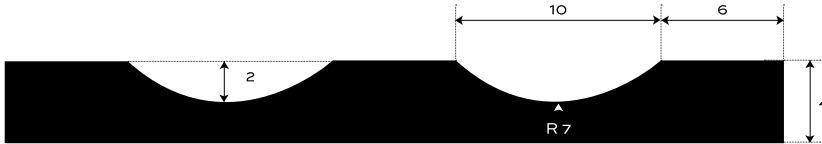
LENGTH

10 m (+/- 200 mm)

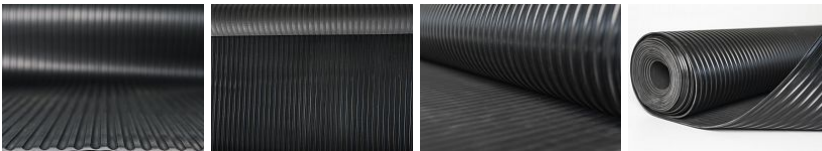
RUBBER FLOORING WIDE RIBBED — S1-EPDM15



| | | | |
|-----------------------------|----------------------|------------------|-----------------------------|
| EXTERIOR ENVIRONMENT | 60 +/- 5 Sh A | 4 mm | 3.7 kg/m² |
| | HARDNESS | THICKNESS | BASIS WEIGHT |



Bottom side - cloth impression



ADDITIONAL INFORMATION

Temperature range -40/+125 °C.

RESISTANCE

| | |
|---------------------|------------------|
| Weather resistance | HIGHLY RESISTANT |
| Ozone resistance | HIGHLY RESISTANT |
| UV resistance | HIGHLY RESISTANT |
| Alkaline resistance | HIGHLY RESISTANT |
| Acid resistance | HIGHLY RESISTANT |
| Oil resistance | MEDIUM RESISTANT |
| Gasoline resistance | NO |

Rubber roofing for interior and exterior surfaces. Durable and easy to maintain with easy handling. In a wide ribbed pattern type S1, heat-resistant in black. In standard thickness 4 mm. It weighs 3.5 kg / m². Specify in the configurator.

CONFIGURATION OPTIONS

THICKNESS

4 mm (+/- 0,3 mm)

WIDTH

1200 mm (+/- 10 mm)

1000 mm (+/- 10 mm)

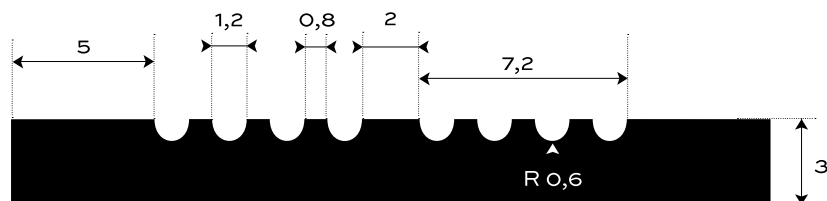
LENGTH

10 m (+/- 200 mm)

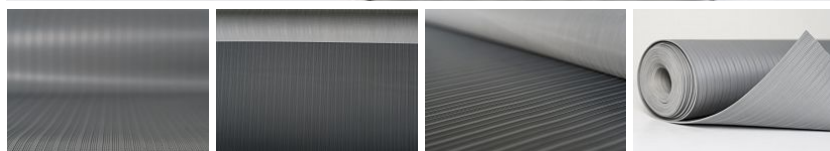
RUBBER FLOORING FINE RIBBED — S2- SBR-COLOR



| | | | |
|--------------------|----------------------|------------------|---------------------------------|
| INTERIOR | 80 +/- 5 Sh A | 3 mm | 3.9-4.1 kg/m² |
| ENVIRONMENT | HARDNESS | THICKNESS | BASIS WEIGHT |



Bottom side - cloth impression



ADDITIONAL INFORMATION

Temperature range -25/+80 °C.

RESISTANCE

| | |
|---------------------|----|
| Weather resistance | NO |
| Ozone resistance | NO |
| UV resistance | NO |
| Alkaline resistance | NO |
| Acid resistance | NO |
| Oil resistance | NO |
| Gasoline resistance | NO |

Rubber roofing for interior surfaces. Durable and low maintenance with easy handling. In a finely grooved design of the S2 type, in the basic design in three colors: gray, blue and green. In standard thickness 3 mm. It weighs 4.1 kg / m². Specify in the configurator.

CONFIGURATION OPTIONS

THICKNESS

3 mm (+/- 0,3 mm)

WIDTH

1200 mm (+/- 10 mm)

1000 mm (+/- 10 mm)

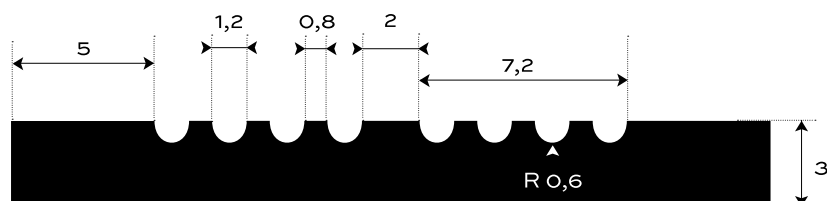
LENGTH

10 m (+/- 200 mm)

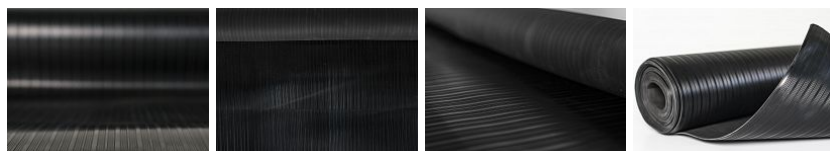
RUBBER FLOORING FINE RIBBED — S2-SBR-STD



| | | | |
|--------------------|----------------------|------------------|-----------------------------|
| INTERIOR | 80 +/- 5 Sh A | 3 mm | 4.2 kg/m² |
| ENVIRONMENT | HARDNESS | THICKNESS | BASIS WEIGHT |



Bottom side - cloth impression



ADDITIONAL INFORMATION

Temperature range -25/+80 °C.

RESISTANCE

| | |
|---------------------|----|
| Weather resistance | NO |
| Ozone resistance | NO |
| UV resistance | NO |
| Alkaline resistance | NO |
| Acid resistance | NO |
| Oil resistance | NO |
| Gasoline resistance | NO |

Rubber roofing for interior surfaces. Durable and low maintenance with easy handling. In a finely grooved design of the S2 type, in the basic design in black. In standard thickness 3 mm. It weighs 4.1 kg / m². Specify in the configurator.

CONFIGURATION OPTIONS

THICKNESS

3 mm (+/- 0,3 mm)

WIDTH

1200 mm (+/- 10 mm)

1000 mm (+/- 10 mm)

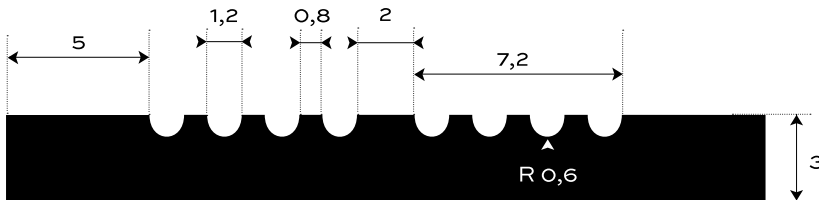
LENGTH

10 m (+/- 200 mm)

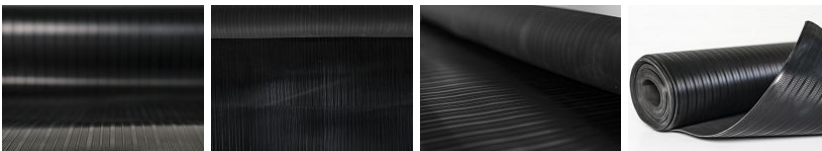
RUBBER FLOORING FINE RIBBED OIL-RESISTANT - S2-NBR72



| | | | |
|--------------------|----------------------|------------------|-----------------------------|
| INTERIOR | 70 +/- 5 Sh A | 3 mm | 3.5 kg/m² |
| ENVIRONMENT | HARDNESS | THICKNESS | BASIS WEIGHT |



Bottom side - cloth impression



ADDITIONAL INFORMATION

Temperature range -25/+80 °C, short-term +90 °C.

RESISTANCE

| | |
|----------------------------|------------------|
| Alkaline resistance | NO |
| Acid resistance | MEDIUM RESISTANT |
| Transformer oil resistance | HIGHLY RESISTANT |
| Oil resistance | HIGHLY RESISTANT |
| Gasoline resistance | HIGHLY RESISTANT |

Rubber roofing for interior surfaces. Durable and low maintenance with easy handling. In a finely grooved pattern of the S2 type, oil-resistant in black color. In standard thickness 3 mm. It weighs 3.5 kg / m². Specify in the configurator.

CONFIGURATION OPTIONS

THICKNESS

3 mm (+/- 0,3 mm)

WIDTH

1200 mm (+/- 10 mm)

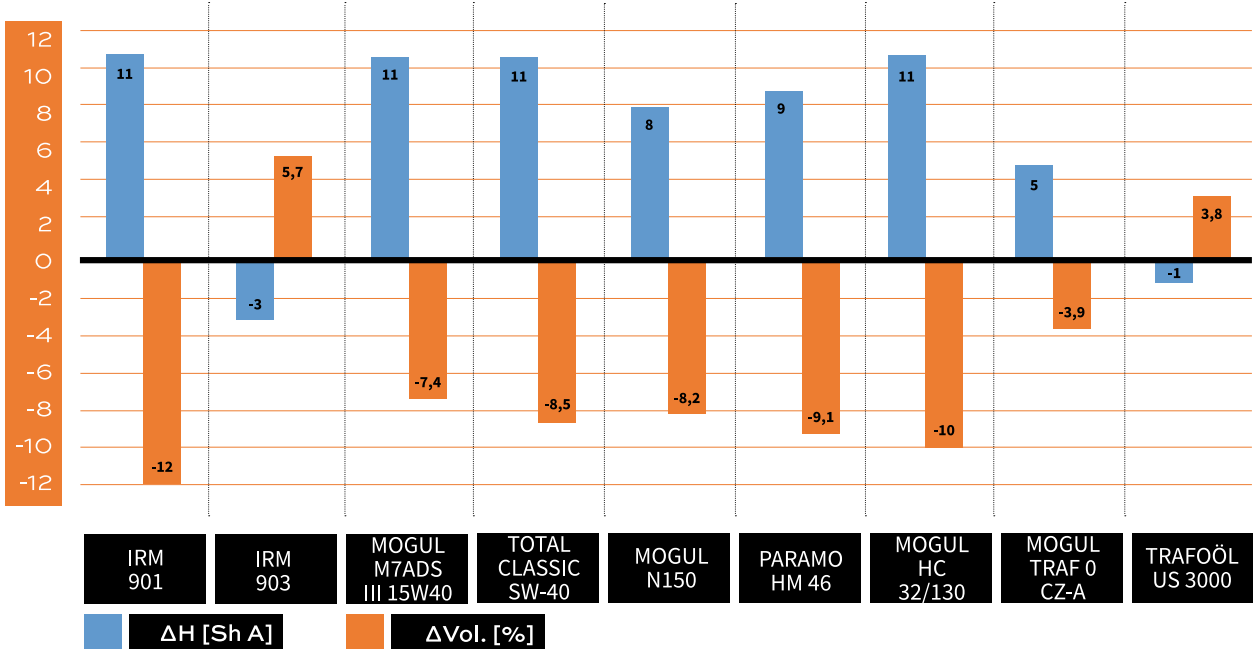
1000 mm (+/- 10 mm)

LENGTH

10 m (+/- 200 mm)

RUBBER FLOORING FINE RIBBED OIL-RESISTANT - S2-NBR72

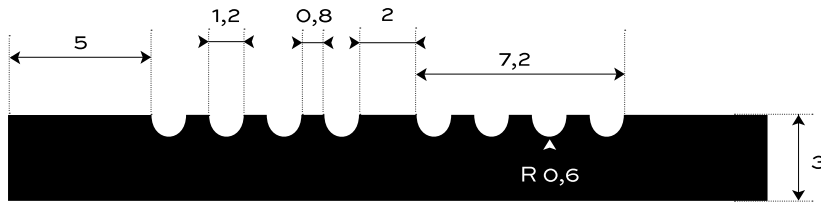
7672 SWELLING RATES



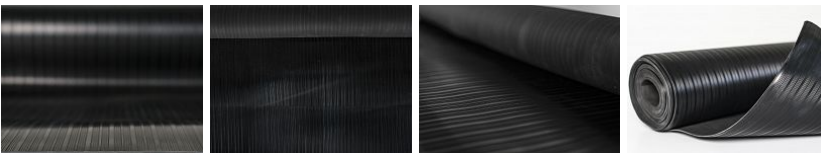
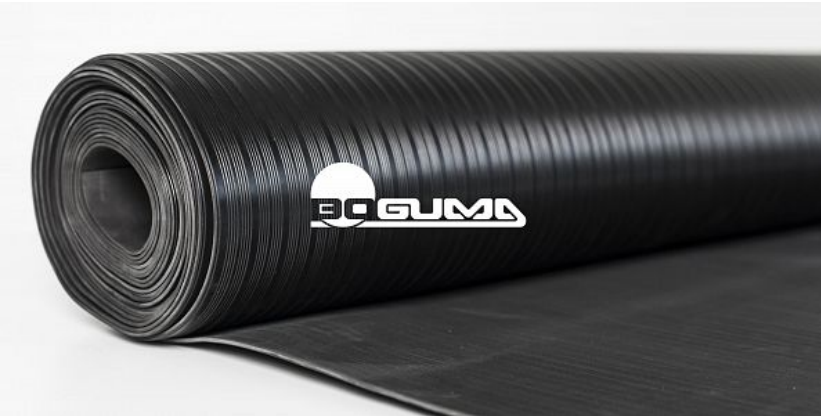
RUBBER FLOORING FINE RIBBED OIL-RESISTANT - S2-NBR45



| | | | |
|-----------------|----------------------|-------------|-----------------------------|
| INTERIOR | 65 +/- 5 Sh A | 3 mm | 4.6 kg/m² |
| ENVIRONMENT | HARDNESS | THICKNESS | BASIS WEIGHT |



Bottom side - cloth impression



ADDITIONAL INFORMATION

Temperature range -25/+80 °C, short-term +90 °C.

RESISTANCE

| | |
|---------------------|------------------|
| Alkaline resistance | NO |
| Acid resistance | NO |
| Oil resistance | HIGHLY RESISTANT |
| Gasoline resistance | MEDIUM RESISTANT |

Rubber roofing for interior surfaces. Durable and low maintenance with easy handling. In a finely grooved pattern of the S2 type, oil-resistant in black color. In standard thickness 3 mm. It weighs 4.6 kg / m². Specify in the configurator.

CONFIGURATION OPTIONS

THICKNESS

3 mm (+/- 0,3 mm)

WIDTH

1200 mm (+/- 10 mm)

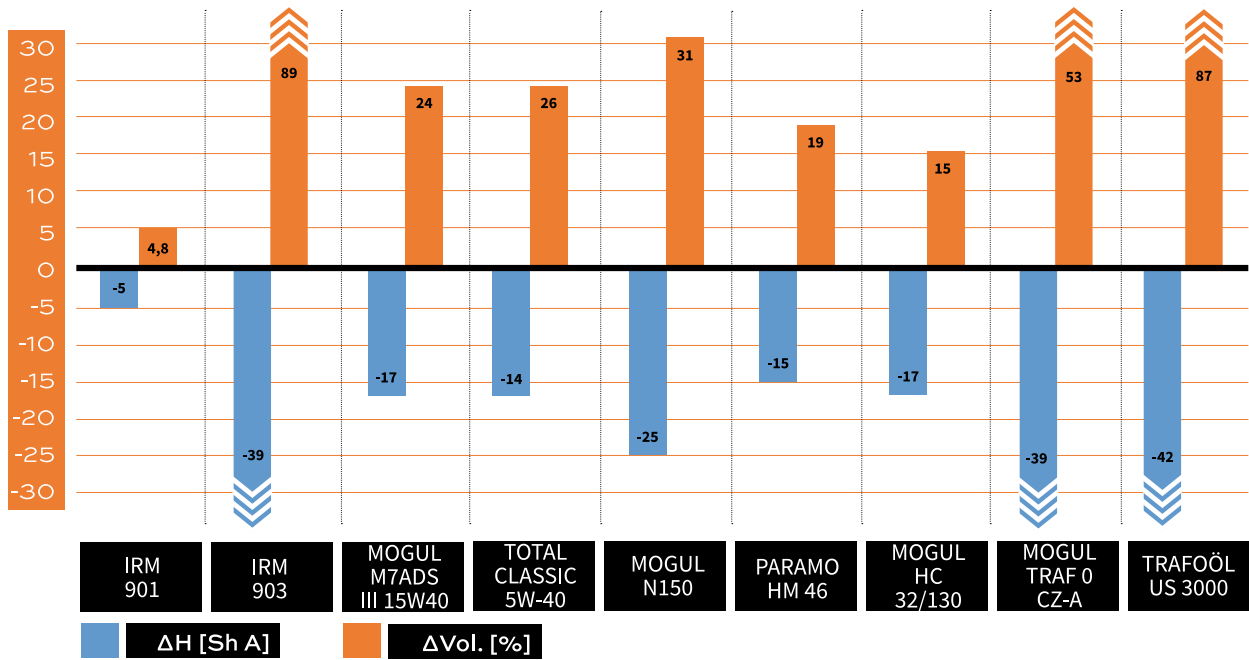
1000 mm (+/- 10 mm)

LENGTH

10 m (+/- 200 mm)

RUBBER FLOORING FINE RIBBED OIL-RESISTANT - S2-NBR45

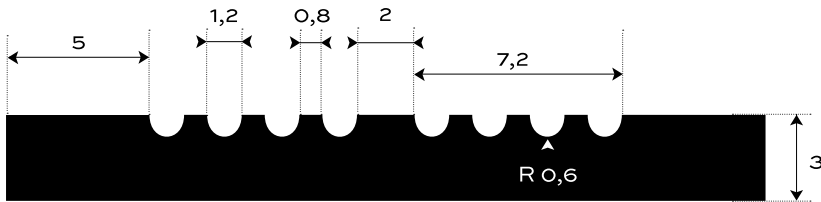
7645 SWELLING RATES



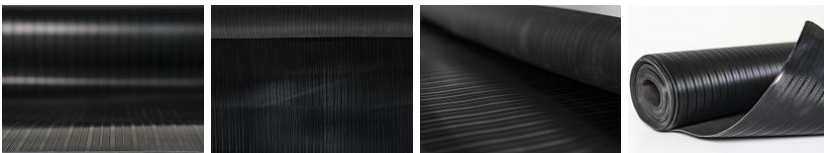
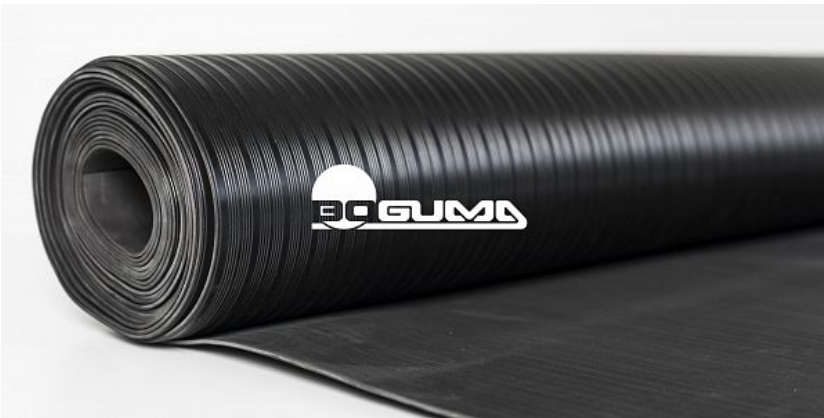
RUBBER FLOORING FINE RIBBED — S2-EPDM96



| | | | |
|-----------------------------|----------------------|------------------|-----------------------------|
| EXTERIOR ENVIRONMENT | 80 +/- 5 Sh A | 3 mm | 3.5 kg/m² |
| | HARDNESS | THICKNESS | BASIS WEIGHT |



Bottom side - cloth impression



ADDITIONAL INFORMATION

Temperature range -40/+100 °C.

RESISTANCE

| | |
|---------------------|------------------|
| Weather resistance | HIGHLY RESISTANT |
| Ozone resistance | HIGHLY RESISTANT |
| UV resistance | HIGHLY RESISTANT |
| Alkaline resistance | HIGHLY RESISTANT |
| Acid resistance | HIGHLY RESISTANT |
| Oil resistance | NO |
| Gasoline resistance | NO |

Rubber roofing for interior and exterior surfaces. Durable and low maintenance with easy handling. In a finely grooved pattern of the S2 type, heat-resistant in black color. In standard thickness 3 mm. It weighs 3.4 kg / m². Specify in the configurator.

CONFIGURATION OPTIONS

THICKNESS

3 mm (+/- 0,3 mm)

WIDTH

1200 mm (+/- 10 mm)

1000 mm (+/- 10 mm)

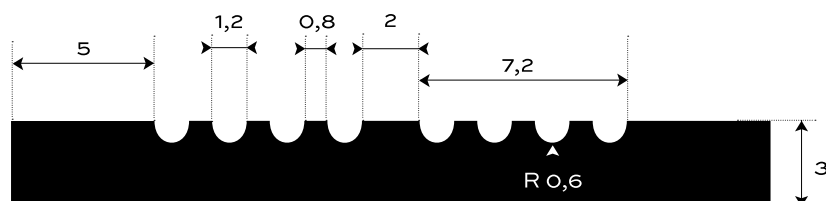
LENGTH

10 m (+/- 200 mm)

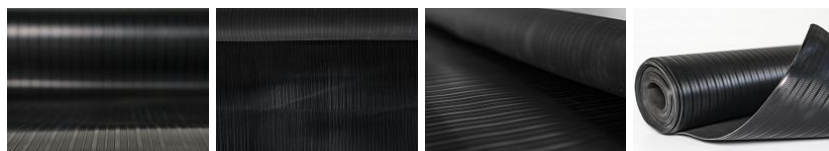
RUBBER FLOORING FINE RIBBED — S2-EPDM95



| | | | |
|--------------------|----------------------|------------------|-----------------------------|
| EXTERIOR | 70 +/- 5 Sh A | 3 mm | 3.5 kg/m² |
| ENVIRONMENT | HARDNESS | THICKNESS | BASIS WEIGHT |



Bottom side - cloth impression



ADDITIONAL INFORMATION

Temperature range -40/+100 °C.

RESISTANCE

| | |
|---------------------|------------------|
| Weather resistance | HIGHLY RESISTANT |
| Ozone resistance | HIGHLY RESISTANT |
| UV resistance | HIGHLY RESISTANT |
| Alkaline resistance | HIGHLY RESISTANT |
| Acid resistance | HIGHLY RESISTANT |
| Oil resistance | NO |
| Gasoline resistance | NO |

Rubber roofing for interior and exterior surfaces. Durable and low maintenance with easy handling. In a finely grooved pattern of the S2 type, heat-resistant in black color. In standard thickness 3 mm. It weighs 3.4 kg / m². Specify in the configurator.

CONFIGURATION OPTIONS

THICKNESS

3 mm (+/- 0,3 mm)

WIDTH

1200 mm (+/- 10 mm)

1000 mm (+/- 10 mm)

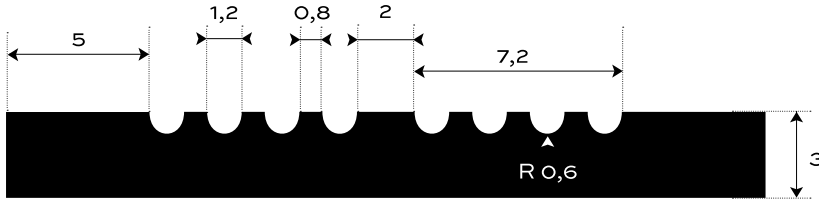
LENGTH

10 m (+/- 200 mm)

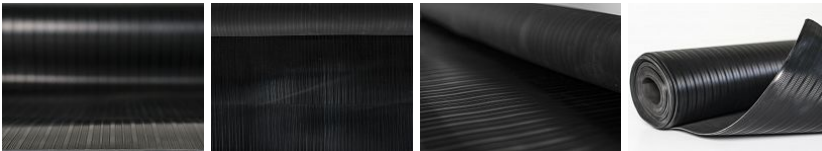
RUBBER FLOORING FINE RIBBED — S2-EPDM15



| | | | |
|-----------------------------|----------------------|------------------|-----------------------------|
| EXTERIOR ENVIRONMENT | 60 +/- 5 Sh A | 3 mm | 3.4 kg/m² |
| | HARDNESS | THICKNESS | BASIS WEIGHT |



Bottom side - cloth impression



ADDITIONAL INFORMATION

Temperature range -40/+125 °C.

RESISTANCE

| | |
|---------------------|------------------|
| Weather resistance | HIGHLY RESISTANT |
| Ozone resistance | HIGHLY RESISTANT |
| UV resistance | HIGHLY RESISTANT |
| Alkaline resistance | HIGHLY RESISTANT |
| Acid resistance | HIGHLY RESISTANT |
| Oil resistance | MEDIUM RESISTANT |
| Gasoline resistance | NO |

Rubber roofing for interior and exterior surfaces. Durable and low maintenance with easy handling. In a finely grooved pattern of the S2 type, heat-resistant in black color. In standard thickness 3 mm. It weighs 3.4 kg / m². Specify in the configurator.

CONFIGURATION OPTIONS

THICKNESS

3 mm (+/- 0,3 mm)

WIDTH

1200 mm (+/- 10 mm)

1000 mm (+/- 10 mm)

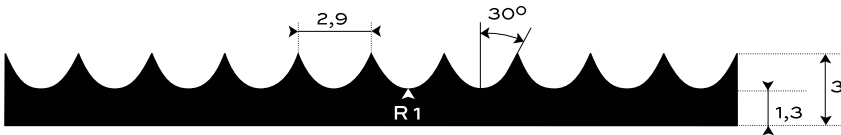
LENGTH

10 m (+/- 200 mm)

RUBBER PADDING FINE RIBBED — S3-SBR



| | | | |
|-----------------|-------------------|-----------|-------------------------|
| INTERIOR | +/- 5 Sh A | mm | kg/m² |
| ENVIRONMENT | HARDNESS | THICKNESS | BASIS WEIGHT |



Bottom side - cloth impression



ADDITIONAL INFORMATION

Custom cuts available.

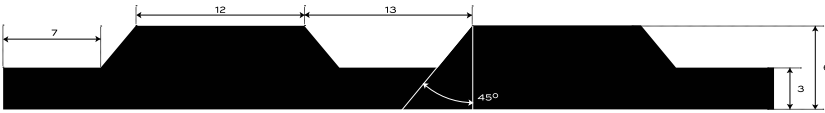
Rubber pad for interior surfaces. Durable and low maintenance with easy handling. In a finely grooved design of the S3 type, in the basic design in four colors: black, gray, blue and green. In standard thickness 3 mm. It weighs 3.3 kg / m². Pad for non-aggressive interior environment. The hardness of the standard version is 65 ShA, which means higher formability and easier handling at different surfaces. Made of SBR and NR rubber compounds. Specify in the configurator.

CONFIGURATION OPTIONS

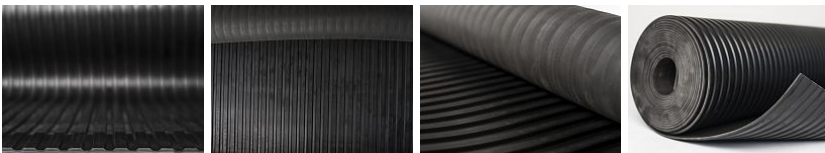
RUBBER FLOORING WIDE RIBBED PATTERN — S4-SBR76



| | | | |
|--------------------|----------------------|------------------|---------------------------------|
| INTERIOR | 80 +/- 5 Sh A | 5-6 mm | 5.9-7.4 kg/m² |
| ENVIRONMENT | HARDNESS | THICKNESS | BASIS WEIGHT |



Bottom side - cloth impression



RESISTANCE

| | |
|---------------------|------------------|
| Abrasion resistance | HIGHLY RESISTANT |
| Weather resistance | NO |
| Ozone resistance | NO |
| UV resistance | NO |
| Alkaline resistance | NO |
| Acid resistance | NO |
| Oil resistance | NO |
| Gasoline resistance | NO |

Rubber roofing for interior surfaces. Durable and low maintenance with easy handling. With a wide ribbed type S4, in black color. In standard thickness 6 mm. It weighs 6.3 kg / m².

CONFIGURATION OPTIONS

THICKNESS

5 mm (+/- 0,5 mm)

6 mm (+/- 0,5 mm)

WIDTH

1230 mm (+/- 10 mm)

LENGTH

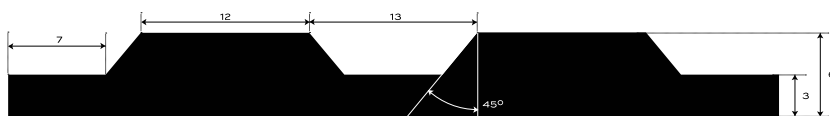
10 m (+/- 200 mm)

S4 — SBR+ Flame
retardant

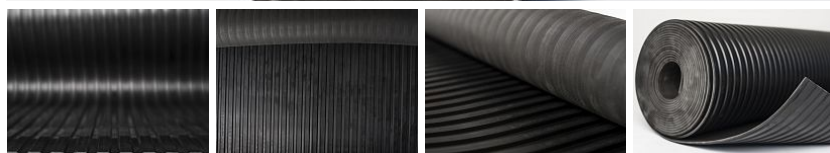
RUBBER FLOORING WIDE RIBBED PATTERN — S4-N



INTERIOR 80 +/- 5 **Sh A** 6 **mm** 5.9 **kg/m²**
ENVIRONMENT **HARDNESS** **THICKNESS** **BASIS WEIGHT**



Bottom side - cloth impression



RESISTANCE

Flame retardant YES
 Abrasion resistance HIGHLY RESISTANT
 Weather resistance NO
 Ozone resistance NO
 UV resistance NO
 Alkaline resistance NO
 Acid resistance NO
 Oil resistance NO
 Gasoline resistance NO

Rubber roofing for interior surfaces. Durable and low maintenance with easy handling. With a wide ribbed type S4, in black color. This flooring is flame retardant according to EN 13501 C_{fl}-s1. In standard thickness 6 mm. It weighs 5.9 kg / m². Specify in the configurator.

This classification is valid for the following end use conditions: - Flooring laid on the any substrates of reaction to fire class A1_{fl} or A2_{fl}.

CONFIGURATION OPTIONS

THICKNESS

6 mm (+/- 0,5 mm)

WIDTH

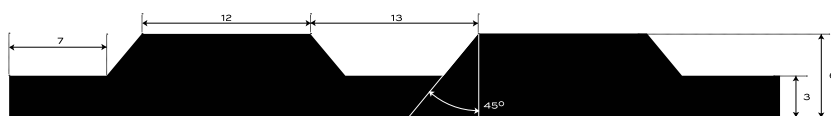
1230 mm (+/- 10 mm)

LENGTH

10 m (+/- 200 mm)

RUBBER FLOORING WIDE RIBBED — S4-
SBR-COLOR

| | | | |
|-----------------|----------------------|-------------|---------------------------|
| INTERIOR | 80 +/- 5 Sh A | 6 mm | 8 kg/m² |
| ENVIRONMENT | HARDNESS | THICKNESS | BASIS WEIGHT |



Bottom side - cloth impression

**ADDITIONAL INFORMATION**

Temperature range -25/+80 °C.

RESISTANCE

| | |
|---------------------|----|
| Weather resistance | NO |
| Ozone resistance | NO |
| UV resistance | NO |
| Alkaline resistance | NO |
| Acid resistance | NO |
| Oil resistance | NO |
| Gasoline resistance | NO |

Rubber roofing for interior surfaces. Durable and low maintenance with easy handling. In a wide grooved design of the S4 type, in the basic design in three colors: gray, blue and green. In standard thickness 6 mm. It weighs 8 kg / m². Specify in the configurator.

CONFIGURATION OPTIONS**THICKNESS**

6 mm (+/- 0,5 mm)

WIDTH

1200 mm (+/- 10 mm)

1000 mm (+/- 10 mm)

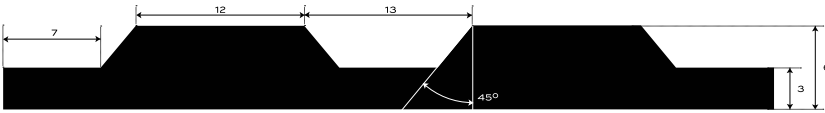
LENGTH

10 m (+/- 200 mm)

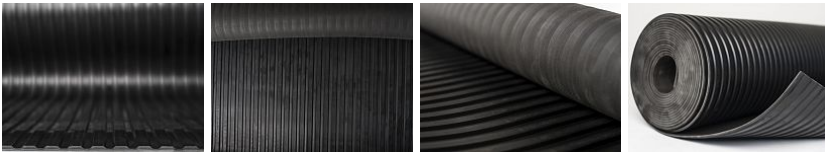
RUBBER FLOORING WIDE RIBBED — S4-SBR-STD



| | | | |
|-----------------|----------------------|-------------|-----------------------------|
| INTERIOR | 80 +/- 5 Sh A | 6 mm | 7.4 kg/m² |
| ENVIRONMENT | HARDNESS | THICKNESS | BASIS WEIGHT |



Bottom side - cloth impression



ADDITIONAL INFORMATION

Temperature range -25/+80 °C.

RESISTANCE

- Weather resistance NO
- Ozone resistance NO
- UV resistance NO
- Alkaline resistance NO
- Acid resistance NO
- Oil resistance NO
- Gasoline resistance NO

Rubber roofing for interior surfaces. Durable and low maintenance with easy handling. In a wide ribbed pattern type S4, in the basic design in black color. In standard thickness 6 mm. It weighs 8 kg / m². Specify in the configurator.

CONFIGURATION OPTIONS

THICKNESS

6 mm (+/- 0,5 mm)

WIDTH

1200 mm (+/- 10 mm)

1000 mm (+/- 10 mm)

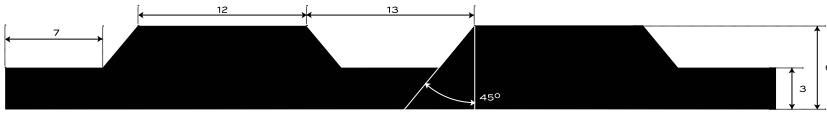
LENGTH

10 m (+/- 200 mm)

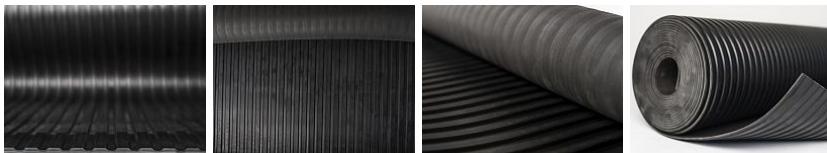
RUBBER FLOORING WIDE RIBBED OIL-RESISTANT - S4-NBR72



| | | | |
|-----------------|----------------------|-------------|-----------------------------|
| INTERIOR | 70 +/- 5 Sh A | 6 mm | 6.4 kg/m² |
| ENVIRONMENT | HARDNESS | THICKNESS | BASIS WEIGHT |



Bottom side - cloth impression



ADDITIONAL INFORMATION

Temperature range -25/+80 °C, short-term +90 °C.

RESISTANCE

| | |
|----------------------------|------------------|
| Alkaline resistance | NO |
| Acid resistance | MEDIUM RESISTANT |
| Transformer oil resistance | HIGHLY RESISTANT |
| Oil resistance | HIGHLY RESISTANT |
| Gasoline resistance | HIGHLY RESISTANT |

Rubber roofing for interior surfaces. Durable and low maintenance with easy handling. In a wide grooved pattern type S4, oil-resistant in black color. In standard thickness 6 mm. It weighs 6.2 kg / m². Specify in the configurator.

CONFIGURATION OPTIONS

THICKNESS

6 mm (+/- 0,5 mm)

WIDTH

1200 mm (+/- 10 mm)

1000 mm (+/- 10 mm)

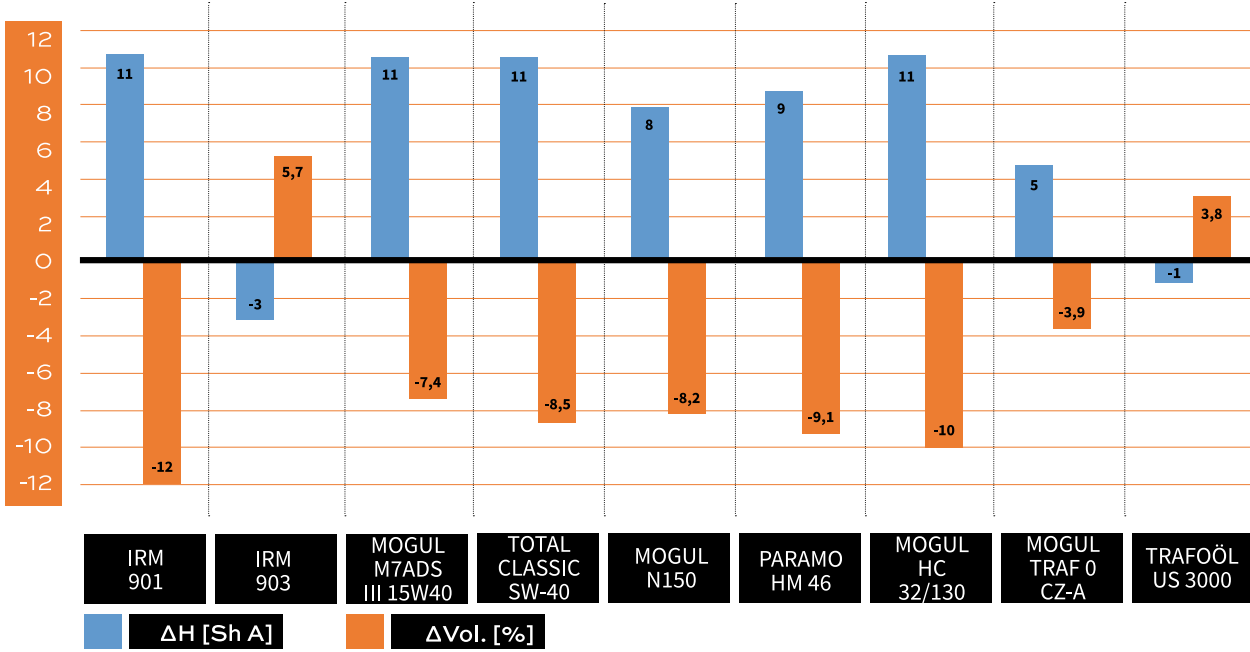
LENGTH

10 m (+/- 200 mm)

S4 — NBR72

RUBBER FLOORING WIDE RIBBED OIL-RESISTANT - S4-NBR72

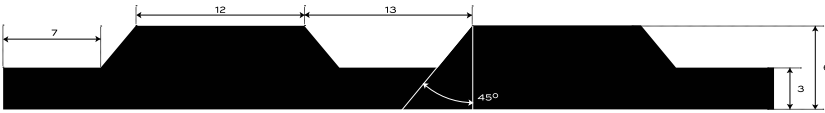
7672 SWELLING RATES



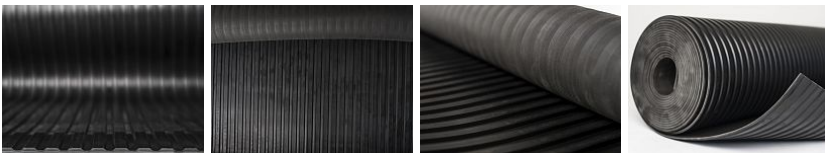
RUBBER FLOORING WIDE RIBBED OIL-RESISTANT - S4-NBR45



| | | | |
|-----------------|----------------------|-------------|-----------------------------|
| INTERIOR | 65 +/- 5 Sh A | 6 mm | 8.2 kg/m² |
| ENVIRONMENT | HARDNESS | THICKNESS | BASIS WEIGHT |



Bottom side - cloth impression



ADDITIONAL INFORMATION

Temperature range -25/+80 °C, short-term +90 °C.

RESISTANCE

- Alkaline resistance NO
- Acid resistance NO
- Oil resistance HIGHLY RESISTANT
- Gasoline resistance MEDIUM RESISTANT

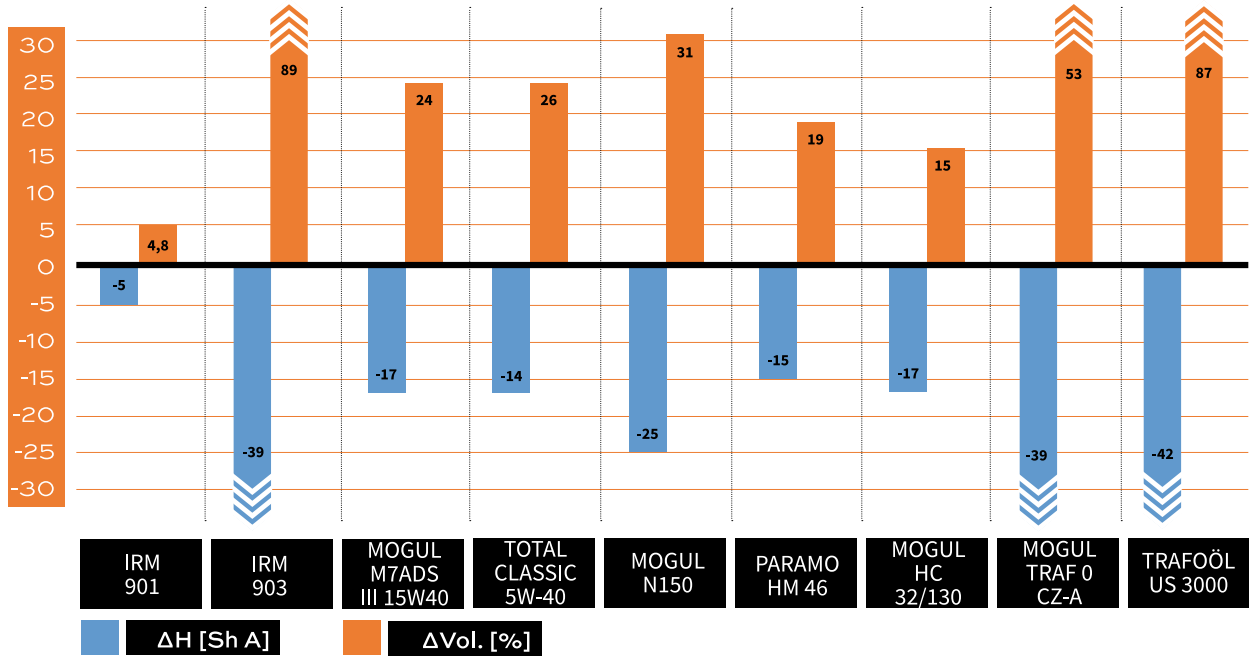
Rubber roofing for interior surfaces. Durable and low maintenance with easy handling. In a wide grooved pattern type S4, oil-resistant in black color. In standard thickness 6 mm. It weighs 8.2 kg / m². Specify in the configurator.

CONFIGURATION OPTIONS

| THICKNESS | |
|-----------|--------------|
| 6 mm | (+/- 0,5 mm) |
| WIDTH | |
| 1200 mm | (+/- 10 mm) |
| 1000 mm | (+/- 10 mm) |
| LENGTH | |
| 10 m | (+/- 200 mm) |

RUBBER FLOORING WIDE RIBBED OIL-RESISTANT - S4-NBR45

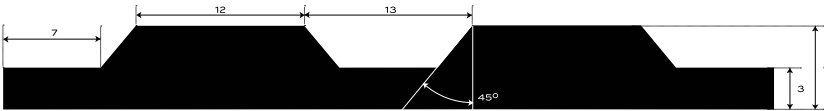
7645 SWELLING RATES



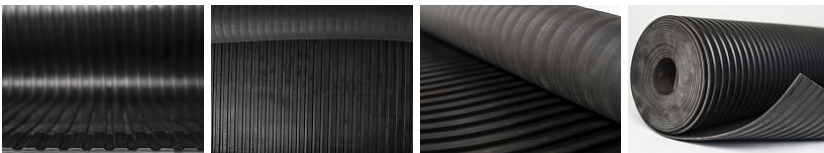
RUBBER FLOORING WIDE RIBBED — S4-EPDM96



| | | | |
|-----------------|----------------------|-------------|-----------------------------|
| EXTERIOR | 80 +/- 5 Sh A | 6 mm | 6.4 kg/m² |
| ENVIRONMENT | HARDNESS | THICKNESS | BASIS WEIGHT |



Bottom side - cloth impression



ADDITIONAL INFORMATION

Temperature range -40/+100 °C.

RESISTANCE

| | |
|---------------------|------------------|
| Weather resistance | HIGHLY RESISTANT |
| Ozone resistance | HIGHLY RESISTANT |
| UV resistance | HIGHLY RESISTANT |
| Alkaline resistance | HIGHLY RESISTANT |
| Acid resistance | HIGHLY RESISTANT |
| Oil resistance | NO |
| Gasoline resistance | NO |

Rubber roofing for interior and exterior surfaces. Durable and low maintenance with easy handling. In a wide ribbed pattern type S4, heat-resistant in black color. In standard thickness 6 mm. It weighs 6.2 kg / m². Specify in the configurator.

CONFIGURATION OPTIONS

THICKNESS

6 mm (+/- 0,5 mm)

WIDTH

1000 mm (+/- 10 mm)

1200 mm (+/- 10 mm)

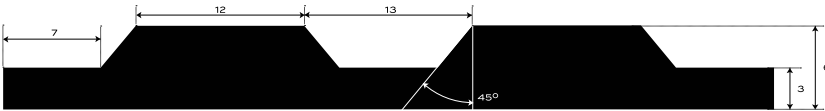
LENGTH

10 m (+/- 200 mm)

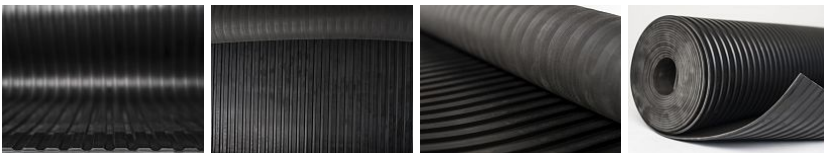
RUBBER FLOORING WIDE RIBBED — S4-EPDM95



| | | | |
|-----------------|----------------------|-------------|-----------------------------|
| EXTERIOR | 70 +/- 5 Sh A | 6 mm | 6.4 kg/m² |
| ENVIRONMENT | HARDNESS | THICKNESS | BASIS WEIGHT |



Bottom side - cloth impression



ADDITIONAL INFORMATION

Temperature range -40/+100 °C.

RESISTANCE

| | |
|---------------------|------------------|
| Weather resistance | HIGHLY RESISTANT |
| Ozone resistance | HIGHLY RESISTANT |
| UV resistance | HIGHLY RESISTANT |
| Alkaline resistance | HIGHLY RESISTANT |
| Acid resistance | HIGHLY RESISTANT |
| Oil resistance | NO |
| Gasoline resistance | NO |

Rubber roofing for interior and exterior surfaces. Durable and low maintenance with easy handling. In a wide ribbed pattern type S4, heat-resistant in black color. In standard thickness 6 mm. It weighs 6.2 kg / m². Specify in the configurator.

CONFIGURATION OPTIONS

THICKNESS

6 mm (+/- 0,5 mm)

WIDTH

1200 mm (+/- 10 mm)

1000 mm (+/- 10 mm)

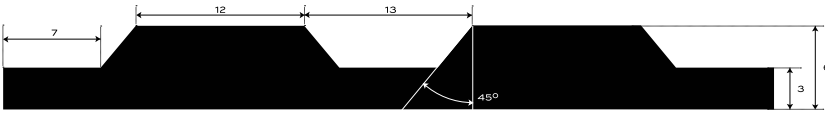
LENGTH

10 m (+/- 200 mm)

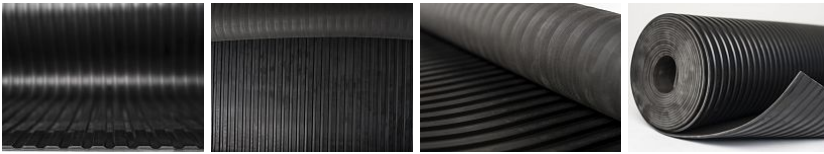
RUBBER FLOORING WIDE RIBBED — S4-EPDM15



| | | | |
|-----------------|----------------------|-------------|-----------------------------|
| EXTERIOR | 60 +/- 5 Sh A | 6 mm | 6.1 kg/m² |
| ENVIRONMENT | HARDNESS | THICKNESS | BASIS WEIGHT |



Bottom side - cloth impression



ADDITIONAL INFORMATION

Temperature range -40/+125 °C.

RESISTANCE

| | |
|---------------------|------------------|
| Weather resistance | HIGHLY RESISTANT |
| Ozone resistance | HIGHLY RESISTANT |
| UV resistance | HIGHLY RESISTANT |
| Alkaline resistance | HIGHLY RESISTANT |
| Acid resistance | HIGHLY RESISTANT |
| Oil resistance | MEDIUM RESISTANT |
| Gasoline resistance | NO |

Rubber roofing for interior and exterior surfaces. Durable and low maintenance with easy handling. In a wide ribbed pattern type S4, heat-resistant in black color. In standard thickness 6 mm. It weighs 6.1 kg / m². Specify in the configurator.

CONFIGURATION OPTIONS

THICKNESS

6 mm (+/- 0,5 mm)

WIDTH

1200 mm (+/- 10 mm)

1000 mm (+/- 10 mm)

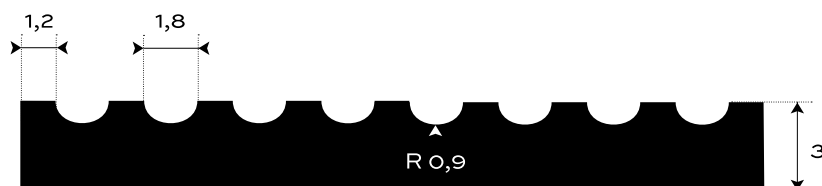
LENGTH

10 m (+/- 200 mm)

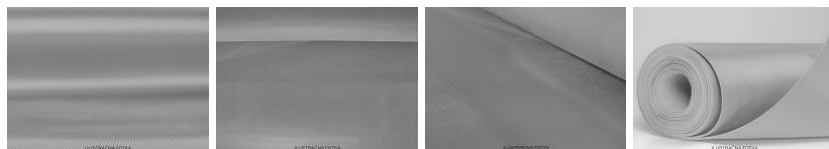
RUBBER FLOORING FINE RIBBED — S5- SBR-COLOR



| | | | |
|--------------------|----------------------|------------------|-----------------------------|
| INTERIOR | 80 +/- 5 Sh A | 3 mm | 4.1 kg/m² |
| ENVIRONMENT | HARDNESS | THICKNESS | BASIS WEIGHT |



Bottom side - cloth impression



ADDITIONAL INFORMATION

Temperature range -25/+80 °C.

RESISTANCE

| | |
|---------------------|----|
| Weather resistance | NO |
| Ozone resistance | NO |
| UV resistance | NO |
| Alkaline resistance | NO |
| Acid resistance | NO |
| Oil resistance | NO |
| Gasoline resistance | NO |

Rubber roofing for interior surfaces. Durable and low maintenance with easy handling. In a finely grooved design of the S5 type, in the basic design in three colors: gray, blue and green. In standard thickness 3 mm. It weighs 4.1 kg / m². Specify in the configurator.

CONFIGURATION OPTIONS

THICKNESS

3 mm (+/- 0,3 mm)

WIDTH

1200 mm (+/- 10 mm)

1000 mm (+/- 10 mm)

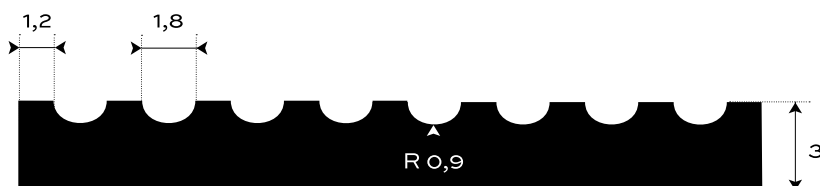
LENGTH

10 m (+/- 200 mm)

RUBBER FLOORING FINE RIBBED — S5- SBR-STD



| | | | |
|-----------------|----------------------|-------------|-----------------------------|
| INTERIOR | 80 +/- 5 Sh A | 3 mm | 4.2 kg/m² |
| ENVIRONMENT | HARDNESS | THICKNESS | BASIS WEIGHT |



Bottom side - cloth impression



ADDITIONAL INFORMATION

Temperature range -25/+80 °C.

RESISTANCE

| | |
|---------------------|----|
| Weather resistance | NO |
| Ozone resistance | NO |
| UV resistance | NO |
| Alkaline resistance | NO |
| Acid resistance | NO |
| Oil resistance | NO |
| Gasoline resistance | NO |

Rubber roofing for interior surfaces. Durable and low maintenance with easy handling. In a fine grooved design of the S5 type, in the basic design in black color. In standard thickness 3 mm. It weighs 4.1 kg / m². Specify in the configurator.

CONFIGURATION OPTIONS

THICKNESS

3 mm (+/- 0,3 mm)

WIDTH

1200 mm (+/- 10 mm)

1000 mm (+/- 10 mm)

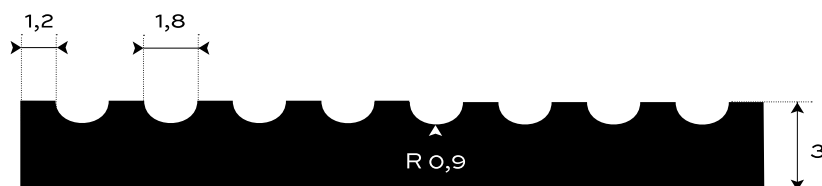
LENGTH

10 m (+/- 200 mm)

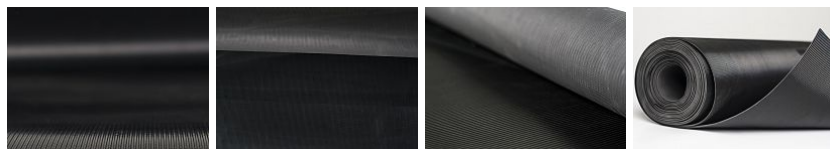
RUBBER FLOORING FINE RIBBED OIL-RESISTANT - S5-NBR72



| | | | |
|--------------------|----------------------|------------------|-----------------------------|
| INTERIOR | 70 +/- 5 Sh A | 3 mm | 3.5 kg/m² |
| ENVIRONMENT | HARDNESS | THICKNESS | BASIS WEIGHT |



Bottom side - cloth impression



ADDITIONAL INFORMATION

Temperature range -25/+80 °C, short-term +90 °C.

RESISTANCE

| | |
|----------------------------|------------------|
| Alkaline resistance | NO |
| Acid resistance | MEDIUM RESISTANT |
| Transformer oil resistance | HIGHLY RESISTANT |
| Oil resistance | HIGHLY RESISTANT |
| Gasoline resistance | HIGHLY RESISTANT |

Rubber roofing for interior surfaces. Durable and low maintenance with easy handling. In a fine ribbed pattern type S5, oil-resistant in black color. In standard thickness 3 mm. It weighs 3.5 kg / m². Specify in the configurator.

CONFIGURATION OPTIONS

THICKNESS

3 mm (+/- 0,3 mm)

WIDTH

1200 mm (+/- 10 mm)

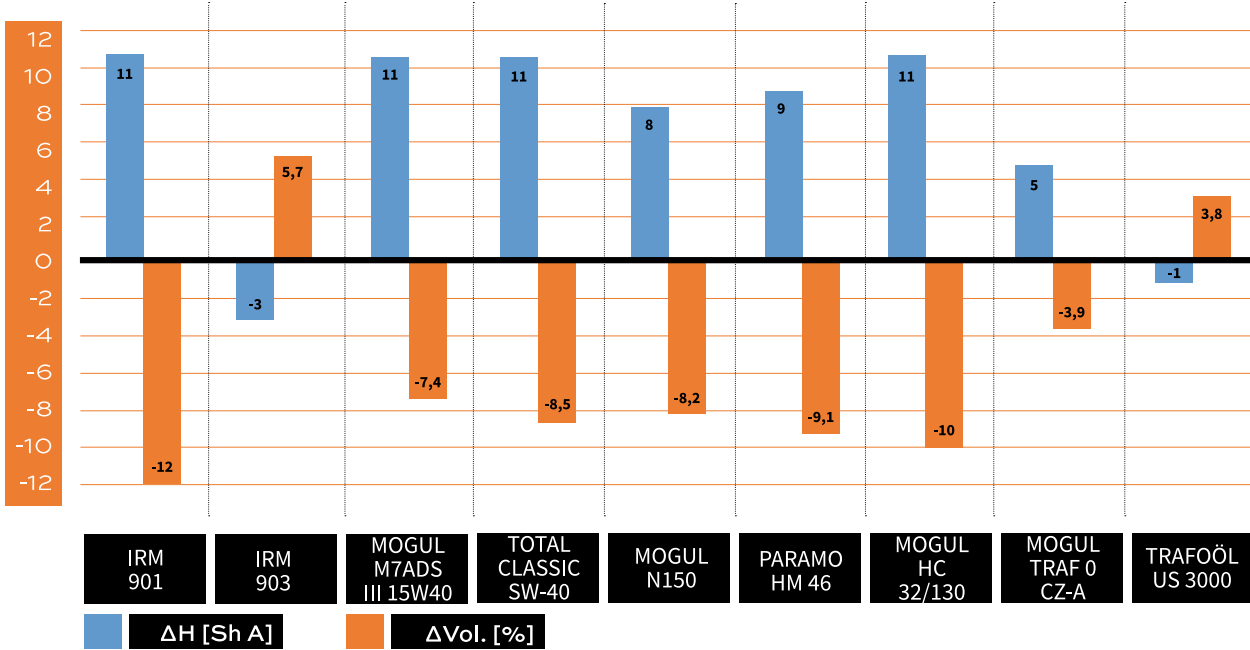
1000 mm (+/- 10 mm)

LENGTH

10 m (+/- 200 mm)

RUBBER FLOORING FINE RIBBED OIL-RESISTANT - S5-NBR72

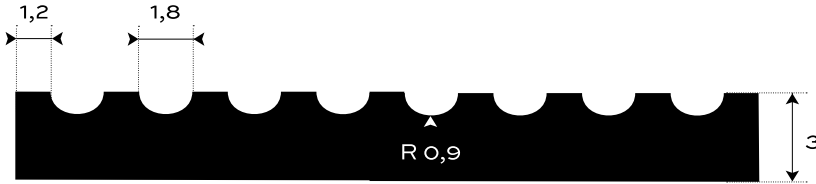
7672 SWELLING RATES



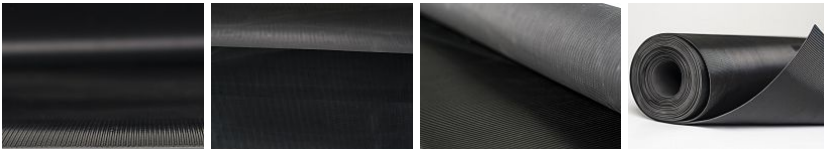
RUBBER FLOORING FINE RIBBED OIL-RESISTANT - S5-NBR45



| | | | |
|--------------------|----------------------|------------------|-----------------------------|
| INTERIOR | 65 +/- 5 Sh A | 3 mm | 4.6 kg/m² |
| ENVIRONMENT | HARDNESS | THICKNESS | BASIS WEIGHT |



Bottom side - cloth impression



ADDITIONAL INFORMATION

Temperature range -25/+80 °C, short-term +90 °C.

RESISTANCE

| | |
|---------------------|------------------|
| Alkaline resistance | NO |
| Acid resistance | NO |
| Oil resistance | HIGHLY RESISTANT |
| Gasoline resistance | MEDIUM RESISTANT |

Rubber roofing for interior surfaces. Durable and easy to maintain with easy handling. In a fine ribbed pattern type S5, oil-resistant in black color. In standard thickness 3 mm. It weighs 4.6 kg / m². Specify in the configurator.

CONFIGURATION OPTIONS

THICKNESS

3 mm (+/- 0,3 mm)

WIDTH

1200 mm (+/- 10 mm)

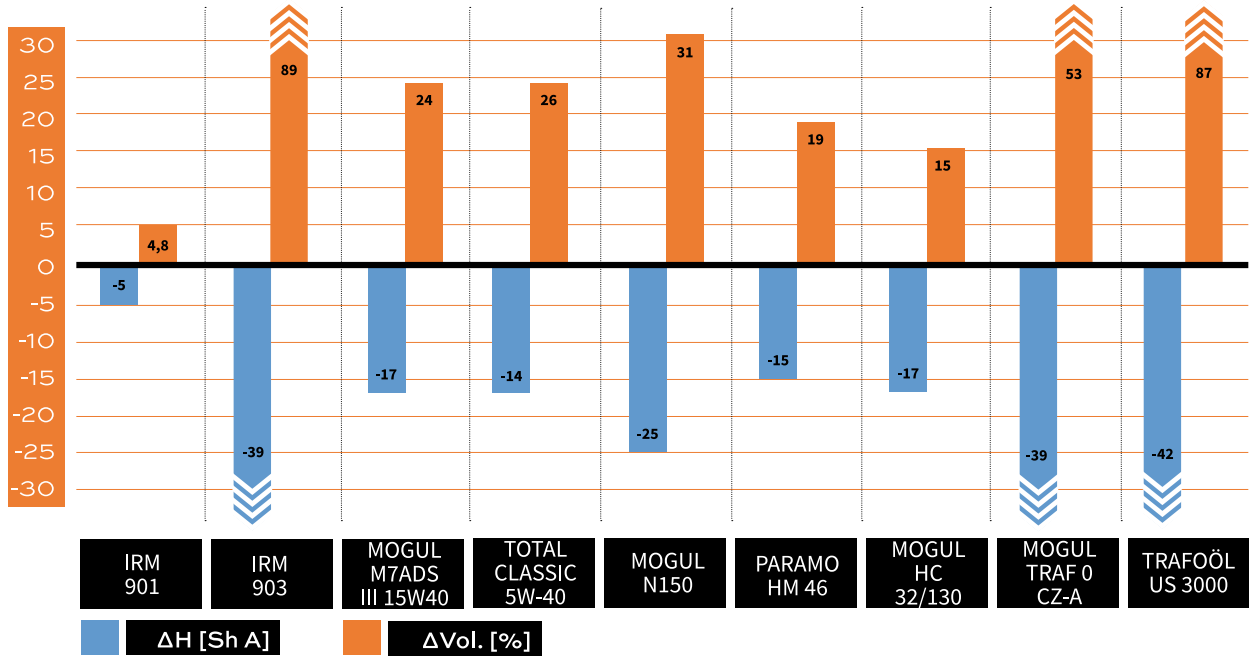
1000 mm (+/- 10 mm)

LENGTH

10 m (+/- 200 mm)

RUBBER FLOORING FINE RIBBED OIL-RESISTANT - S5-NBR45

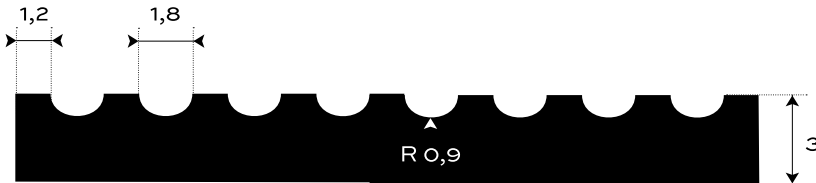
7645 SWELLING RATES



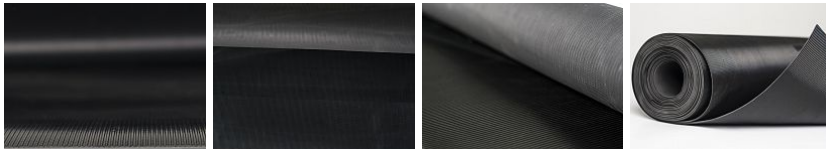
RUBBER FLOORING FINE RIBBED — S5-EPDM96



| | | | |
|--------------------|----------------------|------------------|-----------------------------|
| EXTERIOR | 80 +/- 5 Sh A | 3 mm | 3.5 kg/m² |
| ENVIRONMENT | HARDNESS | THICKNESS | BASIS WEIGHT |



Bottom side - cloth impression



ADDITIONAL INFORMATION

Temperature range -40/+100 °C.

RESISTANCE

| | |
|---------------------|------------------|
| Weather resistance | HIGHLY RESISTANT |
| Ozone resistance | HIGHLY RESISTANT |
| UV resistance | HIGHLY RESISTANT |
| Alkaline resistance | HIGHLY RESISTANT |
| Acid resistance | HIGHLY RESISTANT |
| Oil resistance | NO |
| Gasoline resistance | NO |

Rubber roofing for interior and exterior surfaces. Durable and low maintenance with easy handling. In a fine grooved design of the S5 type, heat-resistant in black color. In standard thickness 3 mm. It weighs 3.4 kg / m². Specify in the configurator.

CONFIGURATION OPTIONS

THICKNESS

3 mm (+/- 0,3 mm)

WIDTH

1200 mm (+/- 10 mm)

1000 mm (+/- 10 mm)

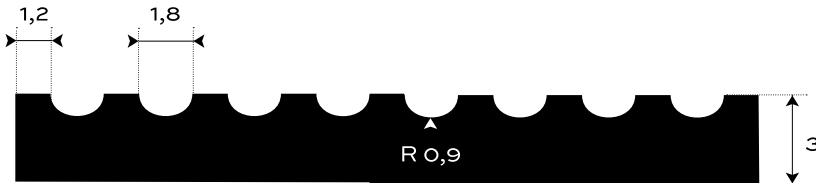
LENGTH

10 m (+/- 200 mm)

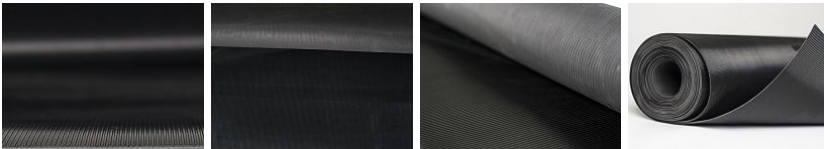
RUBBER FLOORING FINE RIBBED — S5-EPDM95



| | | | | | |
|-----------------|----------------------|------------------|------------|--------------|-----------------------------|
| EXTERIOR | 70 +/- 5 Sh A | 0 | MPa | 3 mm | 3.5 kg/m² |
| ENVIRONMENT | HARDNESS | TENSILE STRENGTH | THICKNESS | BASIS WEIGHT | |



Bottom side - cloth impression



ADDITIONAL INFORMATION

Temperature range -40/+100 °C.

RESISTANCE

| | |
|---------------------|------------------|
| Weather resistance | HIGHLY RESISTANT |
| Ozone resistance | HIGHLY RESISTANT |
| UV resistance | HIGHLY RESISTANT |
| Alkaline resistance | HIGHLY RESISTANT |
| Acid resistance | HIGHLY RESISTANT |
| Oil resistance | NO |
| Gasoline resistance | NO |

Rubber roofing for interior and exterior surfaces. Durable and low maintenance with easy handling. In a fine grooved design of the S5 type, heat-resistant in black color. In standard thickness 3 mm. It weighs 3.4 kg / m². Specify in the configurator.

CONFIGURATION OPTIONS

THICKNESS

3 mm (+/- 0,3 mm)

WIDTH

1200 mm (+/- 10 mm)

1000 mm (+/- 10 mm)

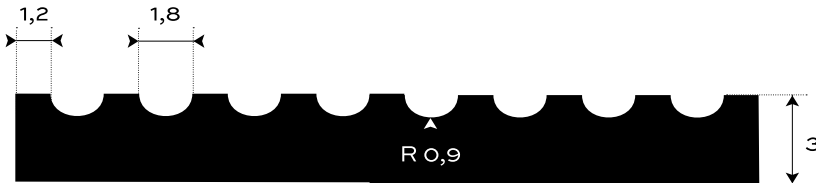
LENGTH

10 m (+/- 200 mm)

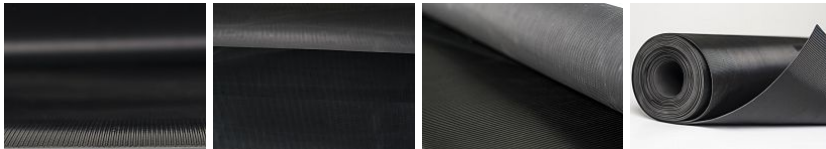
RUBBER FLOORING FINE RIBBED — S5-EPDM15



| | | | |
|-----------------------------|----------------------|------------------|-----------------------------|
| EXTERIOR ENVIRONMENT | 60 +/- 5 Sh A | 3 mm | 3.4 kg/m² |
| | HARDNESS | THICKNESS | BASIS WEIGHT |



Bottom side - cloth impression



ADDITIONAL INFORMATION

Temperature range -40/+125 °C.

RESISTANCE

| | |
|---------------------|------------------|
| Weather resistance | HIGHLY RESISTANT |
| Ozone resistance | HIGHLY RESISTANT |
| UV resistance | HIGHLY RESISTANT |
| Alkaline resistance | HIGHLY RESISTANT |
| Acid resistance | HIGHLY RESISTANT |
| Oil resistance | MEDIUM RESISTANT |
| Gasoline resistance | NO |

Rubber roofing for interior and exterior surfaces. Durable and low maintenance with easy handling. In a fine grooved design of the S5 type, heat-resistant in black color. In standard thickness 3 mm. It weighs 3.4 kg / m². Specify in the configurator.

CONFIGURATION OPTIONS

THICKNESS

3 mm (+/- 0,3 mm)

WIDTH

1200 mm (+/- 10 mm)

1000 mm (+/- 10 mm)

LENGTH

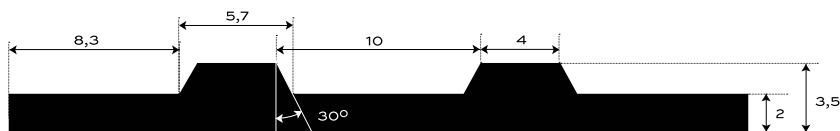
10 m (+/- 200 mm)

S6 — SBR-COLOR

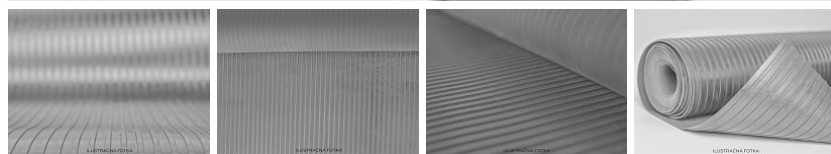
RUBBER FLOORING WIDE RIBBED — S6- SBR-COLOR



| | | | |
|--------------------|----------------------|------------------|---------------------------------|
| INTERIOR | 80 +/- 5 Sh A | 3.5 mm | 3.5-3.9 kg/m² |
| ENVIRONMENT | HARDNESS | THICKNESS | BASIS WEIGHT |



Bottom side - cloth impression



ADDITIONAL INFORMATION

Temperature range -25/+80 °C.

RESISTANCE

| | |
|---------------------|----|
| Weather resistance | NO |
| Ozone resistance | NO |
| UV resistance | NO |
| Alkaline resistance | NO |
| Acid resistance | NO |
| Oil resistance | NO |
| Gasoline resistance | NO |

Rubber roofing for interior surfaces. Durable and easy to maintain with easy handling. In a wide grooved design of the S6 type, in the basic design in three colors: gray, blue and green. In standard thickness 3.5 mm. It weighs 3.9 kg / m². Specify in the configurator.

CONFIGURATION OPTIONS

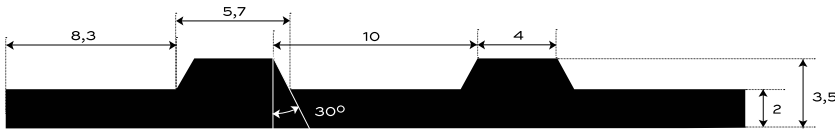
| THICKNESS | |
|-----------|--------------|
| 3.5 mm | (+/- 0,3 mm) |
| WIDTH | |
| 1200 mm | (+/- 10 mm) |
| 1000 mm | (+/- 10 mm) |
| LENGTH | |
| 10 m | (+/- 200 mm) |

S6 — SBR-BLACK

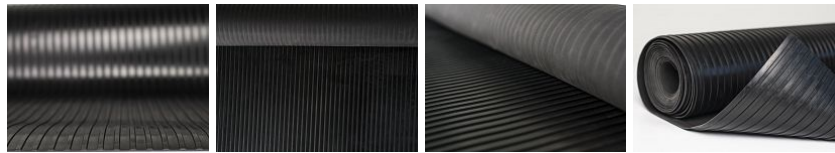
RUBBER FLOORING WIDE RIBBED — S6-SBR-STD



| | | | |
|-----------------------------|----------------------|------------------|-----------------------------|
| INTERIOR ENVIRONMENT | 80 +/- 5 Sh A | 3.5 mm | 4.1 kg/m² |
| | HARDNESS | THICKNESS | BASIS WEIGHT |



Bottom side - cloth impression



ADDITIONAL INFORMATION

Temperature range -25/+80 °C.

RESISTANCE

- Weather resistance NO
- Ozone resistance NO
- UV resistance NO
- Alkaline resistance NO
- Acid resistance NO
- Oil resistance NO
- Gasoline resistance NO

Rubber roofing for interior surfaces. Durable and low maintenance with easy handling. In a wide ribbed pattern type S6, in the basic design in black color. In standard thickness 3.5 mm. It weighs 3.9 kg / m2. Specify in the configurator.

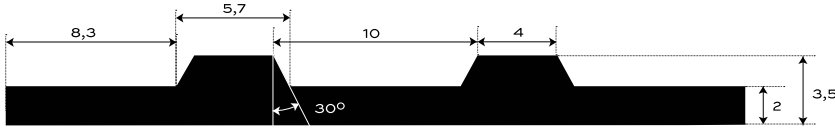
CONFIGURATION OPTIONS

| | |
|------------------|--------------|
| THICKNESS | |
| 3.5 mm | (+/- 0,3 mm) |
| WIDTH | |
| 1200 mm | (+/- 10 mm) |
| 1000 mm | (+/- 10 mm) |
| LENGTH | |
| 10 m | (+/- 200 mm) |

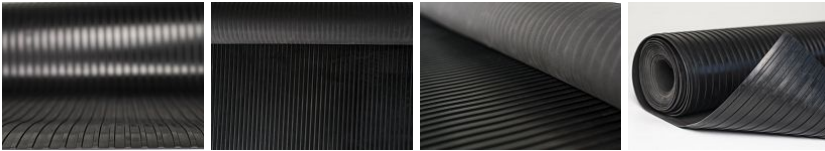
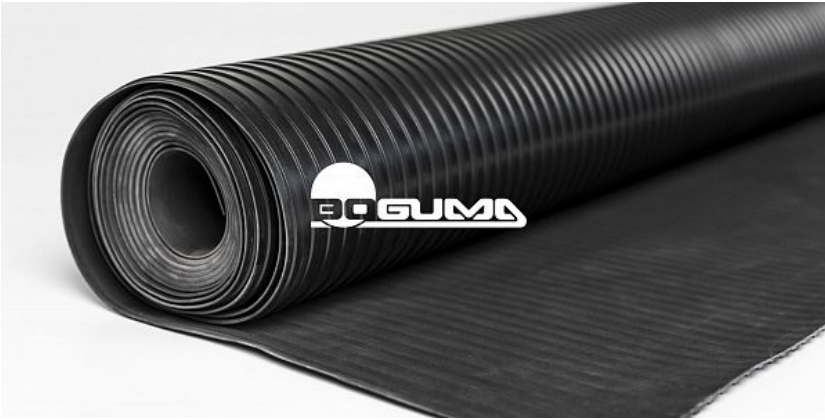
RUBBER FLOORING WIDE RIBBED OIL-RESISTANT - S6-NBR72



| | | | |
|--------------------------------|----------------------------------|----------------------------|---|
| INTERIOR ENVIRONMENT | 70 +/- 5 Sh A HARDNESS | 3.5 mm THICKNESS | 3.1 kg/m² BASIS WEIGHT |
|--------------------------------|----------------------------------|----------------------------|---|



Bottom side - cloth impression



ADDITIONAL INFORMATION

Temperature range -25/+80 °C, short-term +90 °C.

RESISTANCE

| | |
|----------------------------|------------------|
| Alkaline resistance | NO |
| Acid resistance | MEDIUM RESISTANT |
| Transformer oil resistance | HIGHLY RESISTANT |
| Oil resistance | HIGHLY RESISTANT |
| Gasoline resistance | HIGHLY RESISTANT |

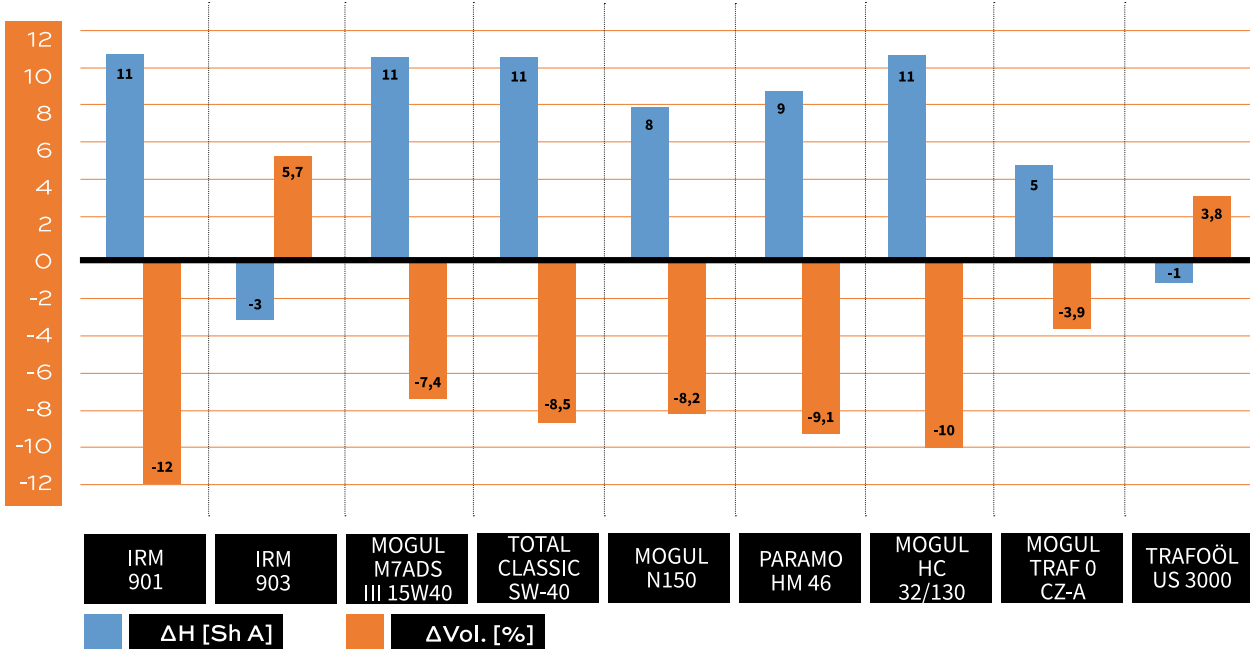
Rubber roofing for interior surfaces. Durable and easy to maintain with easy handling. In a wide grooved pattern type S6, oil-resistant in black color. In standard thickness 3.5 mm. It weighs 3.1 kg / m². Specify in the configurator.

CONFIGURATION OPTIONS

| THICKNESS | |
|-----------|--------------|
| 3.5 mm | (+/- 0,3 mm) |
| WIDTH | |
| 1200 mm | (+/- 10 mm) |
| 1000 mm | (+/- 10 mm) |
| LENGTH | |
| 10 m | (+/- 200 mm) |

RUBBER FLOORING WIDE RIBBED OIL-RESISTANT - S6-NBR72

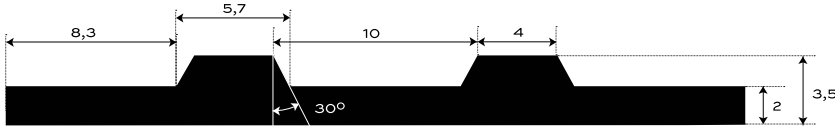
7672 SWELLING RATES



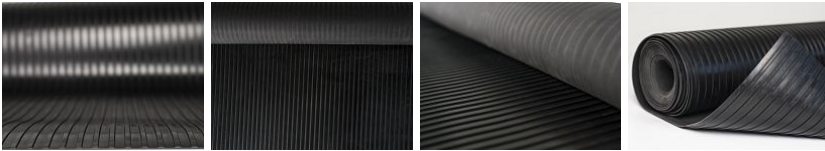
RUBBER FLOORING WIDE RIBBED OIL-RESISTANT - S6-NBR45



| | | | |
|--------------------|----------------------|------------------|-----------------------------|
| INTERIOR | 65 +/- 5 Sh A | 3.5 mm | 4.1 kg/m² |
| ENVIRONMENT | HARDNESS | THICKNESS | BASIS WEIGHT |



Bottom side - cloth impression



ADDITIONAL INFORMATION

Temperature range -25/+80 °C, short-term +90 °C.

RESISTANCE

Alkaline resistance NO
 Acid resistance NO
 Oil resistance HIGHLY RESISTANT
 Gasoline resistance MEDIUM RESISTANT

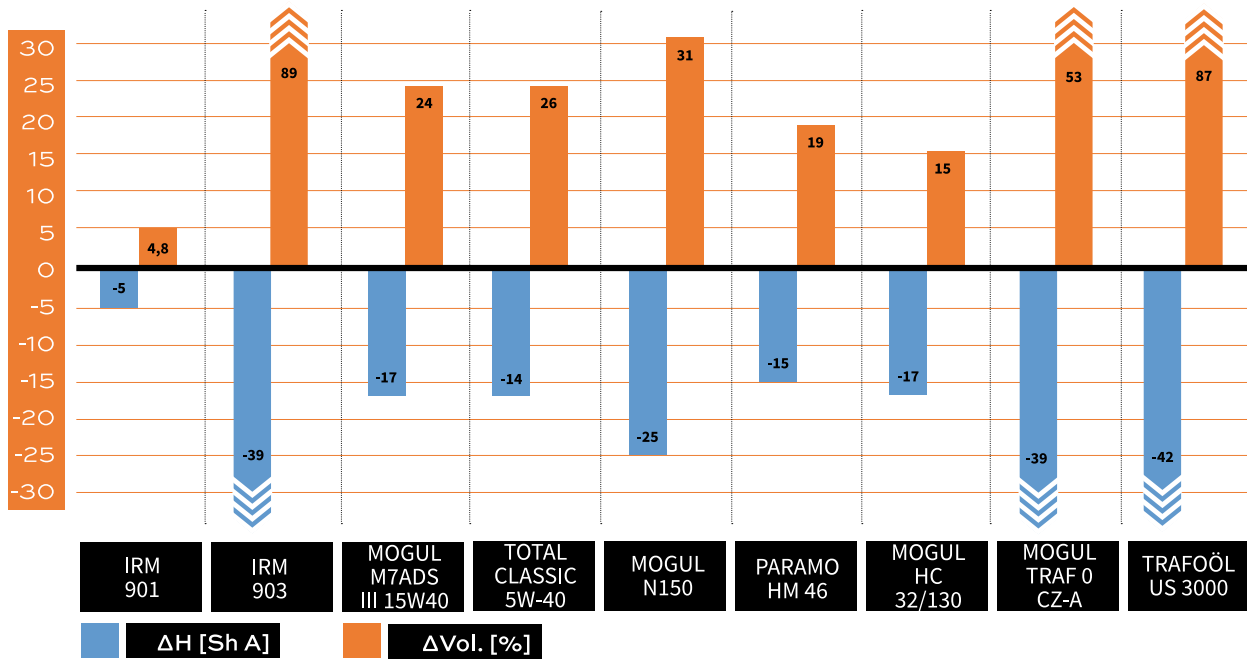
Rubber roofing for interior surfaces. Durable and easy to maintain with easy handling. In a wide ribbed pattern type S6, oil-resistant in black color. In standard thickness 3.5 mm. It weighs 4.1 kg / m². Specify in the configurator.

CONFIGURATION OPTIONS

| THICKNESS | |
|-----------|--------------|
| 3.5 mm | (+/- 0,3 mm) |
| WIDTH | |
| 1200 mm | (+/- 10 mm) |
| 1000 mm | (+/- 10 mm) |
| LENGTH | |
| 10 m | (+/- 200 mm) |

RUBBER FLOORING WIDE RIBBED OIL-RESISTANT - S6-NBR45

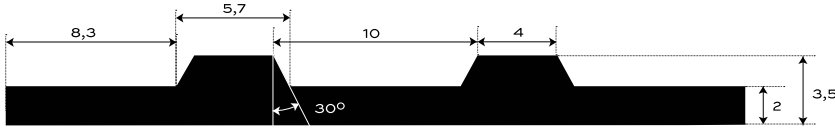
7645 SWELLING RATES



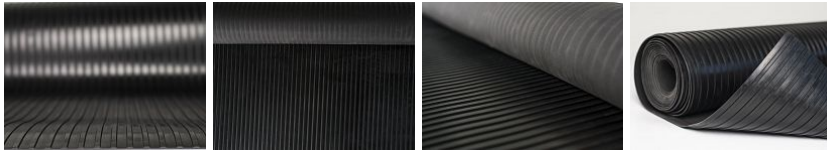
RUBBER FLOORING WIDE RIBBED — S6-EPDM96



| | | | |
|-----------------------------|----------------------|------------------|-----------------------------|
| EXTERIOR ENVIRONMENT | 80 +/- 5 Sh A | 3.5 mm | 3.1 kg/m² |
| | HARDNESS | THICKNESS | BASIS WEIGHT |



Bottom side - cloth impression



ADDITIONAL INFORMATION

Temperature range -40/+100 °C.

RESISTANCE

| | |
|---------------------|------------------|
| Weather resistance | HIGHLY RESISTANT |
| Ozone resistance | HIGHLY RESISTANT |
| UV resistance | HIGHLY RESISTANT |
| Alkaline resistance | HIGHLY RESISTANT |
| Acid resistance | HIGHLY RESISTANT |
| Oil resistance | NO |
| Gasoline resistance | NO |

Rubber roofing for interior and exterior surfaces. Durable and low maintenance with easy handling. In a wide ribbed pattern type S6, heat-resistant in black color. In standard thickness 3.5 mm. It weighs 3 kg / m². Specify in the configurator.

CONFIGURATION OPTIONS

THICKNESS

3.5 mm (+/- 0,3 mm)

WIDTH

1200 mm (+/- 10 mm)

1000 mm (+/- 10 mm)

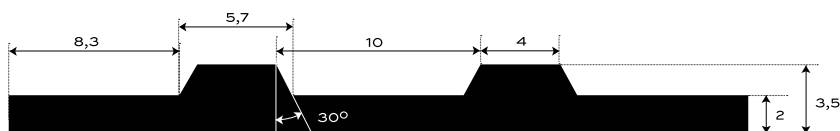
LENGTH

10 m (+/- 200 mm)

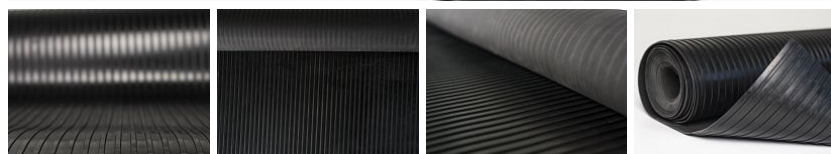
GUMOVÁ DEZÉNOVÁ DLÁŽKOVINA ŠIROKO RYHOVANÁ — S6-EPDM95



| | | | |
|--------------------|----------------------|------------------|-----------------------------|
| EXTERIOR | 70 +/- 5 Sh A | 3.5 mm | 3.1 kg/m² |
| ENVIRONMENT | HARDNESS | THICKNESS | BASIS WEIGHT |



Bottom side - cloth impression



ADDITIONAL INFORMATION

Temperature range -40/+100 °C.

RESISTANCE

| | |
|---------------------|------------------|
| Weather resistance | HIGHLY RESISTANT |
| Ozone resistance | HIGHLY RESISTANT |
| UV resistance | HIGHLY RESISTANT |
| Alkaline resistance | HIGHLY RESISTANT |
| Acid resistance | HIGHLY RESISTANT |
| Oil resistance | NO |
| Gasoline resistance | NO |

Rubber roofing for interior and exterior surfaces. Durable and low maintenance with easy handling. In a wide ribbed pattern type S6, heat-resistant in black color. In standard thickness 3.5 mm. It weighs 3 kg / m². Specify in the configurator.

CONFIGURATION OPTIONS

THICKNESS

3.5 mm (+/- 0,3 mm)

WIDTH

1200 mm (+/- 10 mm)

1000 mm (+/- 10 mm)

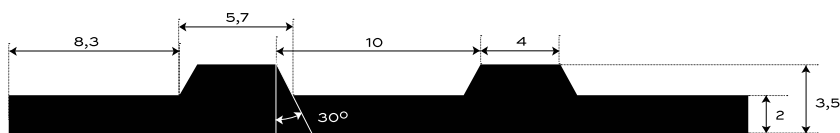
LENGTH

10 m (+/- 200 mm)

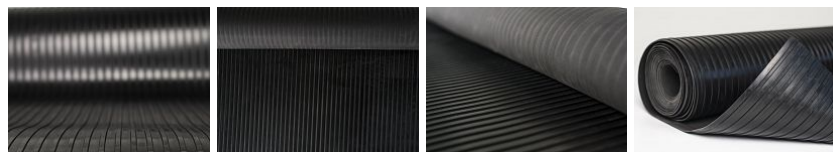
RUBBER FLOORING WIDE RIBBED — S6-EPDM15



| | | | |
|-----------------------------|----------------------|------------------|---------------------------|
| EXTERIOR ENVIRONMENT | 60 +/- 5 Sh A | 3.5 mm | 3 kg/m² |
| | HARDNESS | THICKNESS | BASIS WEIGHT |



Bottom side - cloth impression



ADDITIONAL INFORMATION

Temperature range -40/+125 °C.

RESISTANCE

| | |
|---------------------|------------------|
| Weather resistance | HIGHLY RESISTANT |
| Ozone resistance | HIGHLY RESISTANT |
| UV resistance | HIGHLY RESISTANT |
| Alkaline resistance | HIGHLY RESISTANT |
| Acid resistance | HIGHLY RESISTANT |
| Oil resistance | MEDIUM RESISTANT |
| Gasoline resistance | NO |

Rubber roofing for interior and exterior surfaces. Durable and low maintenance with easy handling. In a wide ribbed pattern type S6, heat-resistant in black color. In standard thickness 3.5 mm. It weighs 2.9 kg / m². Specify in the configurator.

CONFIGURATION OPTIONS

THICKNESS

3.5 mm (+/- 0,3 mm)

WIDTH

1200 mm (+/- 10 mm)

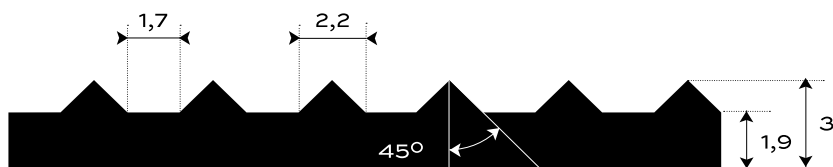
1000 mm (+/- 10 mm)

LENGTH

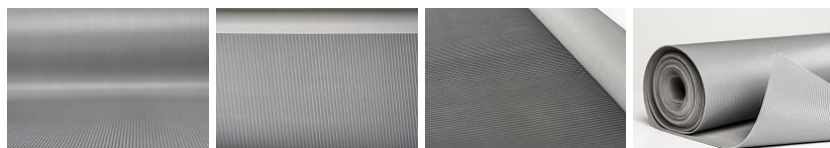
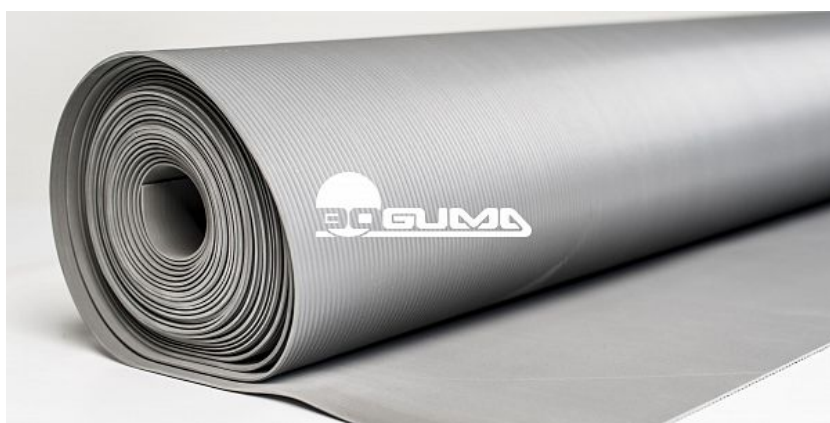
10 m (+/- 200 mm)

RUBBER FLOORING FINE RIBBED — S7-
SBR-COLOR

| | | | |
|-----------------|----------------------|-------------|---------------------------------|
| INTERIOR | 80 +/- 5 Sh A | 3 mm | 3.3-3.4 kg/m² |
| ENVIRONMENT | HARDNESS | THICKNESS | BASIS WEIGHT |



Bottom side - cloth impression

**ADDITIONAL INFORMATION**

Temperature range -25/+80 °C.

RESISTANCE

| | |
|---------------------|----|
| Weather resistance | NO |
| Ozone resistance | NO |
| UV resistance | NO |
| Alkaline resistance | NO |
| Acid resistance | NO |
| Oil resistance | NO |
| Gasoline resistance | NO |

Rubber roofing for interior surfaces. Durable and low maintenance with easy handling. In a finely grooved design of the S7 type, in the basic design in three colors: gray, blue and green. In standard thickness 3 mm. It weighs 3.4 kg / m². Specify in the configurator.

CONFIGURATION OPTIONS**THICKNESS**

3 mm (+/- 0,3 mm)

WIDTH

1200 mm (+/- 10 mm)

1000 mm (+/- 10 mm)

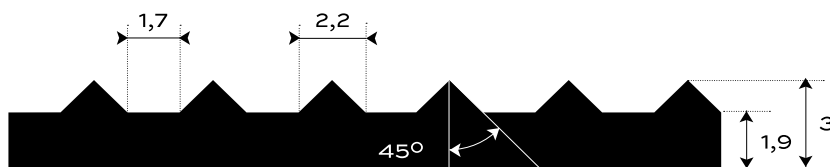
LENGTH

10 m (+/- 200 mm)

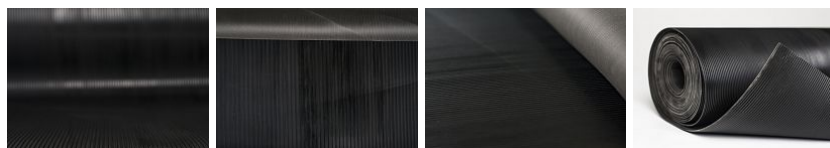
RUBBER FLOORING FINE RIBBED — S7- SBR-STD



| | | | |
|-----------------|----------------------|-------------|-----------------------------|
| INTERIOR | 80 +/- 5 Sh A | 3 mm | 3.3 kg/m² |
| ENVIRONMENT | HARDNESS | THICKNESS | BASIS WEIGHT |



Bottom side - cloth impression



ADDITIONAL INFORMATION

Temperature range -25/+80 °C.

RESISTANCE

| | |
|---------------------|----|
| Weather resistance | NO |
| Ozone resistance | NO |
| UV resistance | NO |
| Alkaline resistance | NO |
| Acid resistance | NO |
| Oil resistance | NO |
| Gasoline resistance | NO |

Rubber roofing for interior surfaces. Durable and low maintenance with easy handling. In a fine grooved design of the S7 type, in the basic design in black color. In standard thickness 3 mm. It weighs 3.4 kg / m². Specify in the configurator.

CONFIGURATION OPTIONS

THICKNESS

3 mm (+/- 0,3 mm)

WIDTH

1200 mm (+/- 10 mm)

1000 mm (+/- 10 mm)

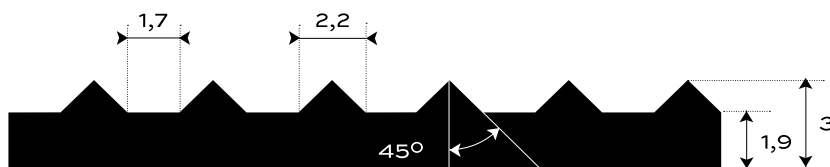
LENGTH

10 m (+/- 200 mm)

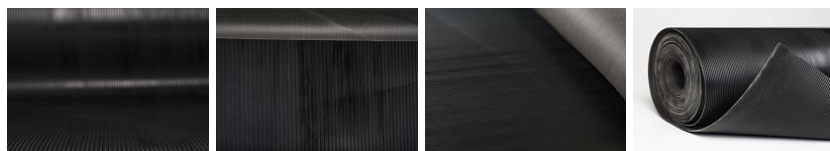
RUBBER FLOORING FINE RIBBED OIL-RESISTANT - S7-NBR72



| | | | |
|-----------------|----------------------|-------------|-----------------------------|
| INTERIOR | 70 +/- 5 Sh A | 3 mm | 2.9 kg/m² |
| ENVIRONMENT | HARDNESS | THICKNESS | BASIS WEIGHT |



Bottom side - cloth impression



ADDITIONAL INFORMATION

Temperature range -25/+80 °C, short-term +90 °C.

RESISTANCE

| | |
|----------------------------|------------------|
| Alkaline resistance | NO |
| Acid resistance | MEDIUM RESISTANT |
| Transformer oil resistance | HIGHLY RESISTANT |
| Oil resistance | HIGHLY RESISTANT |
| Gasoline resistance | HIGHLY RESISTANT |

Rubber roofing for interior surfaces. Durable and easy to maintain with easy handling. In a fine grooved design type S7, oil-resistant in black color. In standard thickness 3 mm. It weighs 2.7 kg / m². Specify in the configurator.

CONFIGURATION OPTIONS

THICKNESS

3 mm (+/- 0,3 mm)

WIDTH

1200 mm (+/- 10 mm)

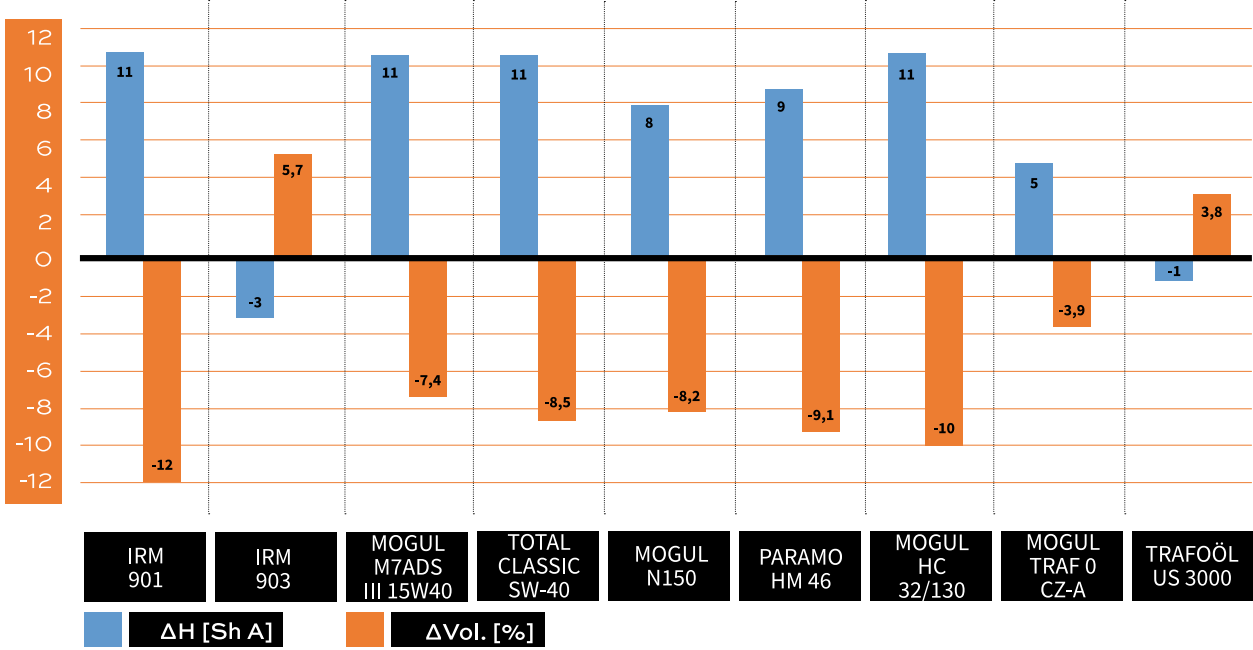
1000 mm (+/- 10 mm)

LENGTH

10 m (+/- 200 mm)

RUBBER FLOORING FINE RIBBED OIL-RESISTANT - S7-NBR72

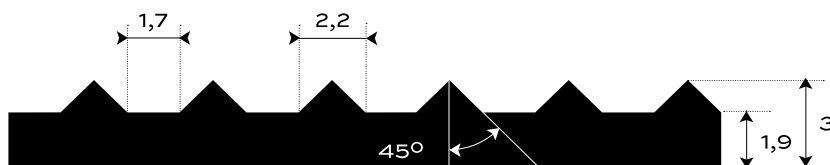
7672 SWELLING RATES



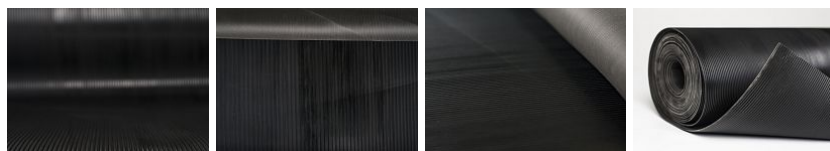
RUBBER FLOORING FINE RIBBED OIL-RESISTANT - S7-NBR45



| | | | |
|-----------------|----------------------|-------------|-----------------------------|
| INTERIOR | 65 +/- 5 Sh A | 3 mm | 3.4 kg/m² |
| ENVIRONMENT | HARDNESS | THICKNESS | BASIS WEIGHT |



Bottom side - cloth impression



ADDITIONAL INFORMATION

Temperature range -25/+80 °C, short-term +90 °C.

RESISTANCE

| | |
|---------------------|------------------|
| Alkaline resistance | NO |
| Acid resistance | NO |
| Oil resistance | HIGHLY RESISTANT |
| Gasoline resistance | MEDIUM RESISTANT |

Rubber roofing for interior surfaces. Durable and easy to maintain with easy handling. In a fine grooved design type S7, oil-resistant in black. In standard thickness 3 mm. It weighs 3.6 kg / m². Specify in the configurator.

CONFIGURATION OPTIONS

THICKNESS

3 mm (+/- 0,3 mm)

WIDTH

1200 mm (+/- 10 mm)

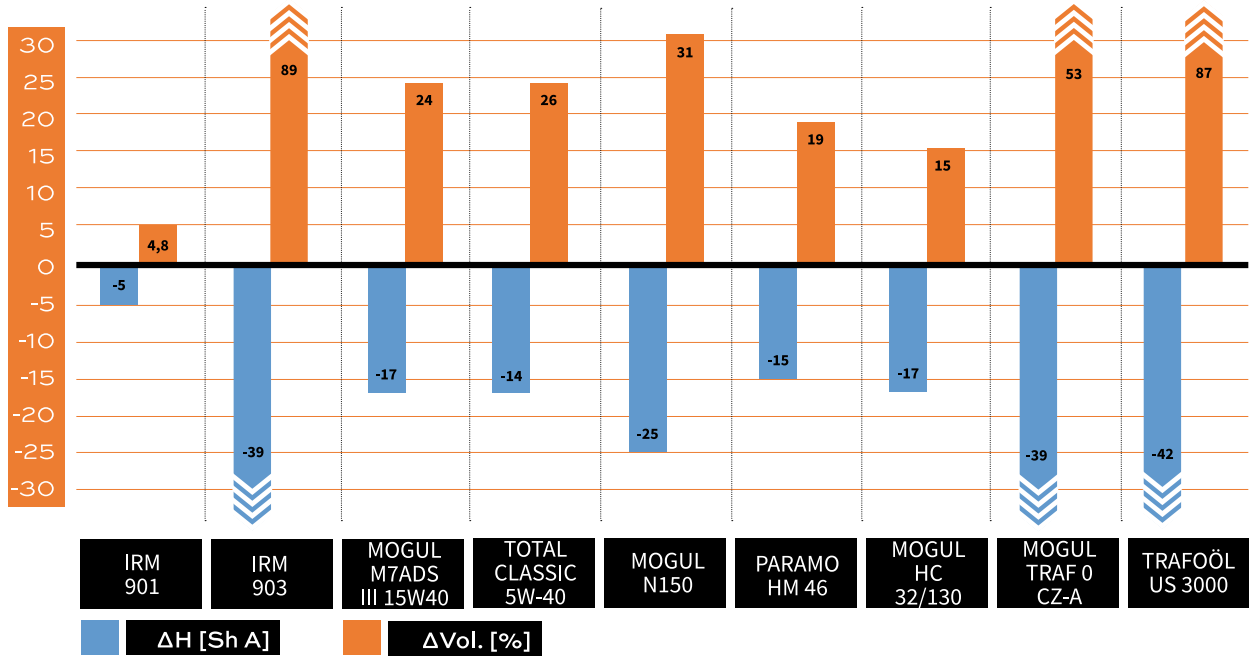
1000 mm (+/- 10 mm)

LENGTH

10 m (+/- 200 mm)

RUBBER FLOORING FINE RIBBED OIL-RESISTANT - S7-NBR45

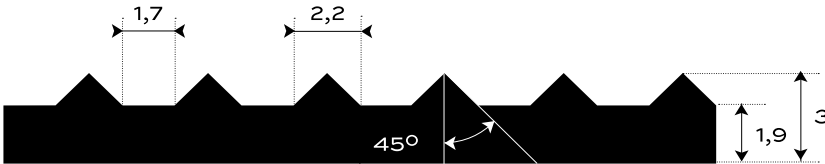
7645 SWELLING RATES



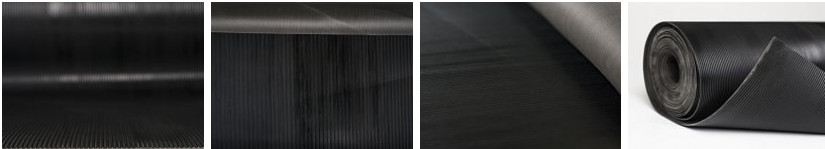
RUBBER FLOORING FINE RIBBED — S7-EPDM96



| | | | |
|-----------------|----------------------|-------------|-----------------------------|
| EXTERIOR | 80 +/- 5 Sh A | 3 mm | 2.9 kg/m² |
| ENVIRONMENT | HARDNESS | THICKNESS | BASIS WEIGHT |



Bottom side - cloth impression



ADDITIONAL INFORMATION

Temperature range -40/+100 °C.

RESISTANCE

| | |
|---------------------|------------------|
| Weather resistance | HIGHLY RESISTANT |
| Ozone resistance | HIGHLY RESISTANT |
| UV resistance | HIGHLY RESISTANT |
| Alkaline resistance | HIGHLY RESISTANT |
| Acid resistance | HIGHLY RESISTANT |
| Oil resistance | NO |
| Gasoline resistance | NO |

Rubber flooring for interior and exterior surfaces. Durable and easy to maintain with easy handling. In a finely grooved design type S7, heat-resistant in black. In standard thickness 3 mm. It weighs 2.7 kg / m². Specify in the configurator.

CONFIGURATION OPTIONS

THICKNESS

3 mm (+/- 0,3 mm)

WIDTH

1000 mm (+/- 10 mm)

1200 mm (+/- 10 mm)

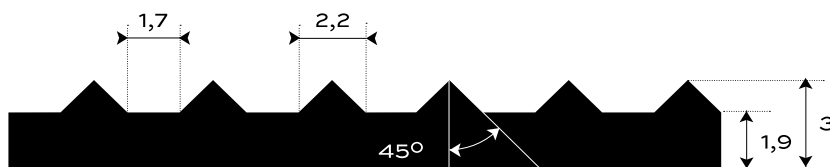
LENGTH

10 m (+/- 200 mm)

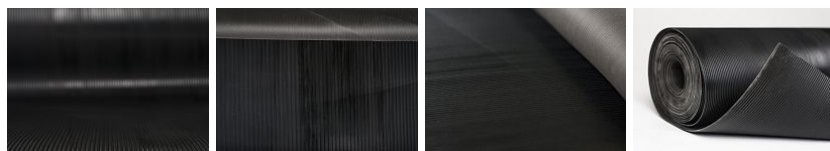
RUBBER FLOORING FINE RIBBED — S7-EPDM95



| | | | | | | |
|--------------------|-----------------|-------------|------------------|-----------|---------------------|-------------------------|
| EXTERIOR | 70 +/- 5 | Sh A | 3 | mm | 2.9 | kg/m² |
| ENVIRONMENT | HARDNESS | | THICKNESS | | BASIS WEIGHT | |



Bottom side - cloth impression



ADDITIONAL INFORMATION

Temperature range -40/+100 °C.

RESISTANCE

| | |
|---------------------|------------------|
| Weather resistance | HIGHLY RESISTANT |
| Ozone resistance | HIGHLY RESISTANT |
| UV resistance | HIGHLY RESISTANT |
| Alkaline resistance | HIGHLY RESISTANT |
| Acid resistance | HIGHLY RESISTANT |
| Oil resistance | NO |
| Gasoline resistance | NO |

Rubber flooring for interior and exterior surfaces. Durable and easy to maintain with easy handling. In a finely grooved design type S7, heat-resistant in black. In standard thickness 3 mm. It weighs 2.7 kg / m². Specify in the configurator.

CONFIGURATION OPTIONS

THICKNESS

3 mm (+/- 0,3 mm)

WIDTH

1200 mm (+/- 10 mm)

1000 mm (+/- 10 mm)

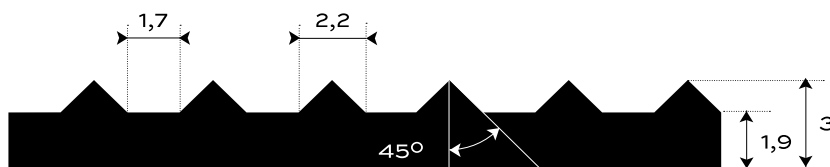
LENGTH

10 m (+/- 200 mm)

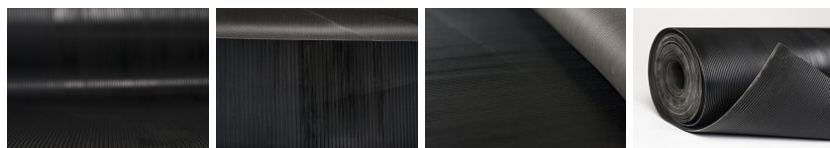
RUBBER FLOORING FINE RIBBED — S7-EPDM15



| | | | |
|-----------------|----------------------|-------------|-----------------------------|
| EXTERIOR | 60 +/- 5 Sh A | 3 mm | 2.8 kg/m² |
| ENVIRONMENT | HARDNESS | THICKNESS | BASIS WEIGHT |



Bottom side - cloth impression



ADDITIONAL INFORMATION

Temperature range -40/+125 °C.

RESISTANCE

| | |
|---------------------|------------------|
| Weather resistance | HIGHLY RESISTANT |
| Ozone resistance | HIGHLY RESISTANT |
| UV resistance | HIGHLY RESISTANT |
| Alkaline resistance | HIGHLY RESISTANT |
| Acid resistance | HIGHLY RESISTANT |
| Oil resistance | MEDIUM RESISTANT |
| Gasoline resistance | NO |

Rubber flooring for interior and exterior surfaces. Durable and easy to maintain with easy handling. In a finely grooved design type S7, heat-resistant in black. In standard thickness 3 mm. It weighs 2.7 kg / m². Specify in the configurator.

CONFIGURATION OPTIONS

THICKNESS

3 mm (+/- 0,3 mm)

WIDTH

1200 mm (+/- 10 mm)

1000 mm (+/- 10 mm)

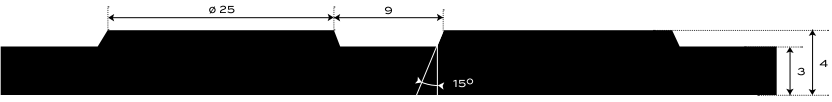
LENGTH

10 m (+/- 200 mm)

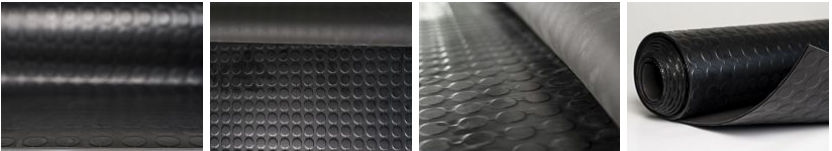
RUBBER FLOORING COIN PATTERN — S8-CB



| | | | | | |
|-----------------------------|-------------------|---------------|------------------|-----------|-----------------------|
| EXTERIOR ENVIRONMENT | -40 - +120 °C | 65 +/- 5 Sh A | 12 MPa | 4 mm | 4.3 kg/m ² |
| | TEMPERATURE RANGE | HARDNESS | TENSILE STRENGTH | THICKNESS | BASIS WEIGHT |



Bottom side - cloth impression



ADDITIONAL INFORMATION

Polymer content: 58 % EPDM, 19 % NR, 23 % SBR

RESISTANCE

| | |
|---------------------|------------------|
| Weather resistance | HIGHLY RESISTANT |
| Ozone resistance | HIGHLY RESISTANT |
| UV resistance | HIGHLY RESISTANT |
| Alkaline resistance | HIGHLY RESISTANT |
| Acid resistance | HIGHLY RESISTANT |
| Oil resistance | MEDIUM RESISTANT |
| Gasoline resistance | NO |

Rubber roofing for interior and exterior surfaces. Durable and low maintenance with easy handling. With a coin pattern (round stud) type S8, heat-resistant in black color. In standard thickness 4 mm. It weighs 4.2 kg / m². Specify in the configurator.

CONFIGURATION OPTIONS

| THICKNESS | |
|-----------|--------------|
| 4 mm | (+/- 0,3 mm) |

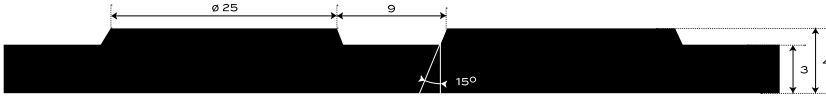
| WIDTH | |
|---------|-------------|
| 1230 mm | (+/- 10 mm) |

| LENGTH | |
|--------|--------------|
| 10 m | (+/- 200 mm) |

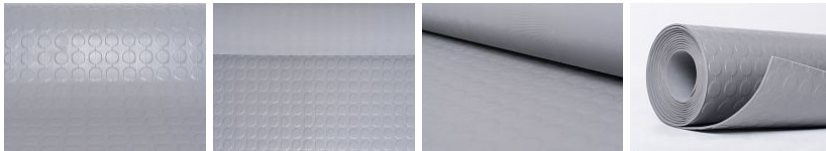
RUBBER FLOORING COIN PATTERN — S8- SBR-COLOR



| | | | |
|--------------------|----------------------|------------------|----------------------------------|
| INTERIOR | 80 +/- 5 Sh A | 4-10 mm | 5.7-16.1 kg/m² |
| ENVIRONMENT | HARDNESS | THICKNESS | BASIS WEIGHT |



Bottom side - cloth impression



ADDITIONAL INFORMATION

Temperature range -25/+80 °C.

RESISTANCE

| | |
|----------------------------|------------------|
| Abrasion resistance | HIGHLY RESISTANT |
| Weather resistance | NO |
| Ozone resistance | NO |
| UV resistance | NO |
| Alkaline resistance | NO |
| Acid resistance | NO |
| Oil resistance | NO |
| Gasoline resistance | NO |
| Acid resistance | MEDIUM RESISTANT |
| Transformer oil resistance | HIGHLY RESISTANT |
| Oil resistance | HIGHLY RESISTANT |
| Gasoline resistance | HIGHLY RESISTANT |
| | NO |

Rubber roofing for interior surfaces. Durable and low maintenance with easy handling. With a coin pattern type S8, in the basic design in six colors: gray, dark gray, blue, green, red and yellow. In standard thickness 4 mm. It weighs 5.7 kg / m². Specify in the configurator.

CONFIGURATION OPTIONS

THICKNESS

| | |
|-------|--------------|
| 4 mm | (+/- 0,3 mm) |
| 5 mm | (+/- 0,5 mm) |
| 6 mm | (+/- 0,5 mm) |
| 8 mm | (+/- 0,6 mm) |
| 10 mm | (+/- 0,6 mm) |

WIDTH

| | |
|---------|-------------|
| 1230 mm | (+/- 10 mm) |
|---------|-------------|

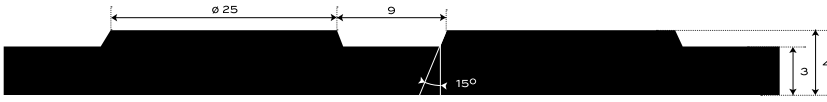
LENGTH

| | |
|------|--------------|
| 10 m | (+/- 200 mm) |
|------|--------------|

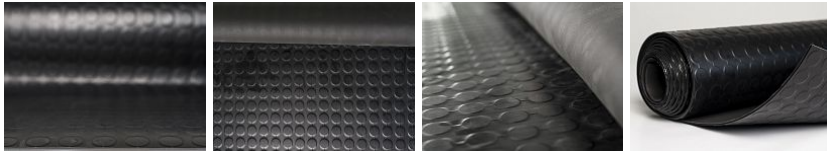
RUBBER FLOORING COIN PATTERN — S8 - SBR-BLK



| | | | |
|-----------------------------|----------------------|------------------|--------------------------------|
| INTERIOR ENVIRONMENT | 80 +/- 5 Sh A | 4-12 mm | 6-19.9 kg/m² |
| | HARDNESS | THICKNESS | BASIS WEIGHT |



Bottom side - cloth impression



ADDITIONAL INFORMATION

Temperature range -25/+80 °C.

RESISTANCE

| | |
|---------------------|------------------|
| Abrasion resistance | HIGHLY RESISTANT |
| Weather resistance | NO |
| Ozone resistance | NO |
| UV resistance | NO |
| Alkaline resistance | NO |
| Acid resistance | NO |
| Oil resistance | NO |
| Gasoline resistance | NO |

Rubber roofing for interior surfaces. Durable and low maintenance with easy handling. With a coin pattern type S8, in the basic design in black. In standard thickness 4 mm. It weighs 5.7 kg / m². Specify in the configurator.

CONFIGURATION OPTIONS

THICKNESS

| | |
|-------|--------------|
| 4 mm | (+/- 0,3 mm) |
| 5 mm | (+/- 0,5 mm) |
| 6 mm | (+/- 0,5 mm) |
| 8 mm | (+/- 0,6 mm) |
| 10 mm | (+/- 0,6 mm) |
| 12 mm | (+/- 1,0 mm) |

WIDTH

| | |
|---------|-------------|
| 1230 mm | (+/- 10 mm) |
|---------|-------------|

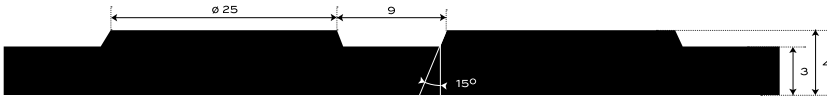
LENGTH

| | |
|------|--------------|
| 10 m | (+/- 200 mm) |
|------|--------------|

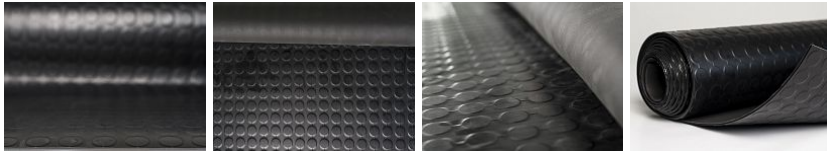
RUBBER FLOORING COIN PATTERN OIL-RESISTANT - S8-NBR72



| | | | |
|-----------------------------|----------------------|------------------|----------------------------------|
| INTERIOR ENVIRONMENT | 70 +/- 5 Sh A | 4-10 mm | 5.2-13.1 kg/m² |
| | HARDNESS | THICKNESS | BASIS WEIGHT |



Bottom side - cloth impression



ADDITIONAL INFORMATION

Temperature range -25/+80 °C, short-term +90 °C.

RESISTANCE

| | |
|----------------------------|------------------|
| Alkaline resistance | NO |
| Acid resistance | MEDIUM RESISTANT |
| Transformer oil resistance | HIGHLY RESISTANT |
| Oil resistance | HIGHLY RESISTANT |
| Gasoline resistance | HIGHLY RESISTANT |

Rubber roofing for interior surfaces. Durable and low maintenance with easy handling. With coin pattern (round stud) type S8, oil-resistant in black. In standard thickness 4 mm. It weighs 5.1 kg / m2. Specify in the configurator.

CONFIGURATION OPTIONS

THICKNESS

| | |
|-------|--------------|
| 4 mm | (+/- 0,3 mm) |
| 5 mm | (+/- 0,5 mm) |
| 6 mm | (+/- 0,5 mm) |
| 8 mm | (+/- 0,6 mm) |
| 10 mm | (+/- 0,6 mm) |

WIDTH

| | |
|---------|-------------|
| 1230 mm | (+/- 10 mm) |
|---------|-------------|

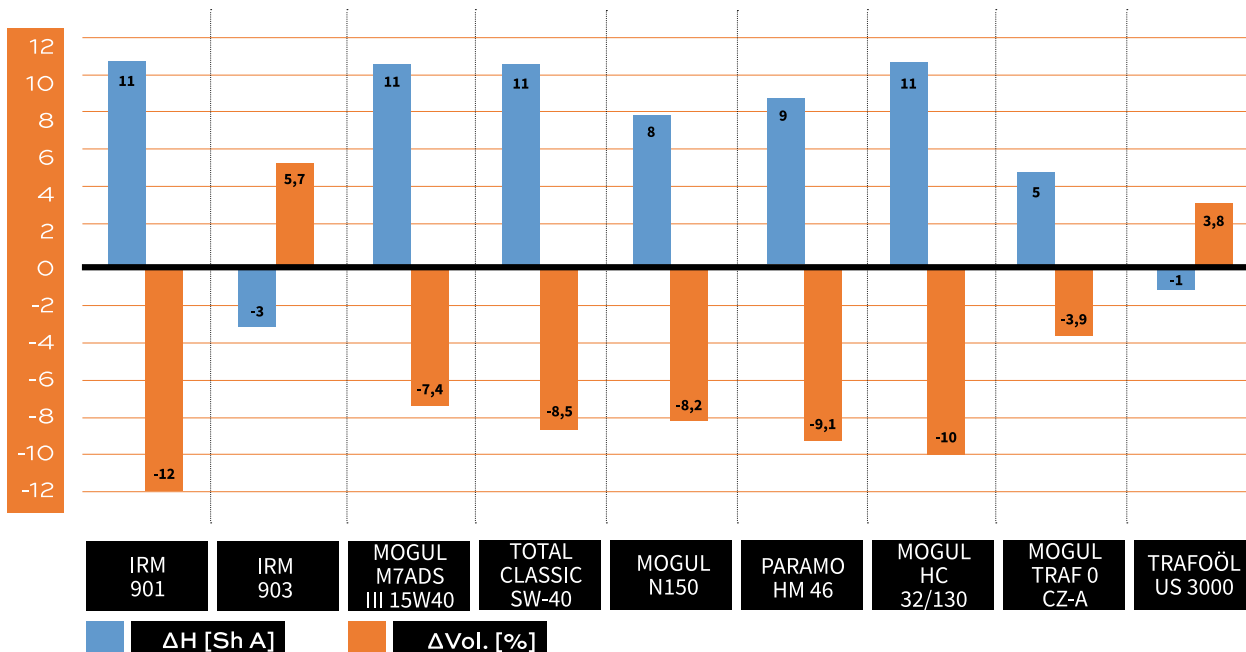
LENGTH

| | |
|------|--------------|
| 10 m | (+/- 200 mm) |
|------|--------------|

S8 — NBR72

RUBBER FLOORING COIN PATTERN OIL-RESISTANT - S8-NBR72

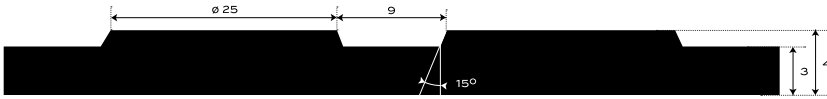
7672 SWELLING RATES



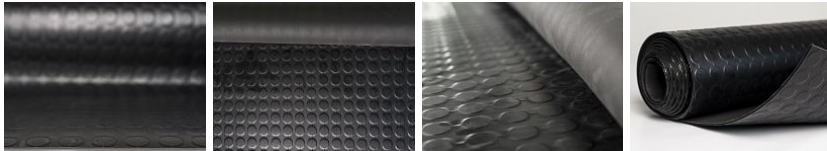
RUBBER FLOORING COIN PATTERN OIL-RESISTANT - S8-NBR45



INTERIOR 65 +/- 5 **Sh A** 4-10 **mm** 6.3-16.9 **kg/m²**
ENVIRONMENT **HARDNESS** **THICKNESS** **BASIS WEIGHT**



Bottom side - cloth impression



ADDITIONAL INFORMATION

Temperature range -25/+80 °C, short-term +90 °C.

RESISTANCE

Alkaline resistance NO
 Acid resistance NO
 Oil resistance HIGHLY RESISTANT
 Gasoline resistance MEDIUM RESISTANT

Rubber roofing for interior surfaces. Durable and easy to maintain with easy handling. With coin pattern (round stud) type S8, oil-resistant in black. In standard thickness 4 mm. It weighs 6.6 kg / m². Specify in the configurator.

CONFIGURATION OPTIONS

THICKNESS

| | |
|-------|--------------|
| 4 mm | (+/- 0,3 mm) |
| 5 mm | (+/- 0,5 mm) |
| 6 mm | (+/- 0,5 mm) |
| 8 mm | (+/- 0,6 mm) |
| 10 mm | (+/- 0,6 mm) |

WIDTH

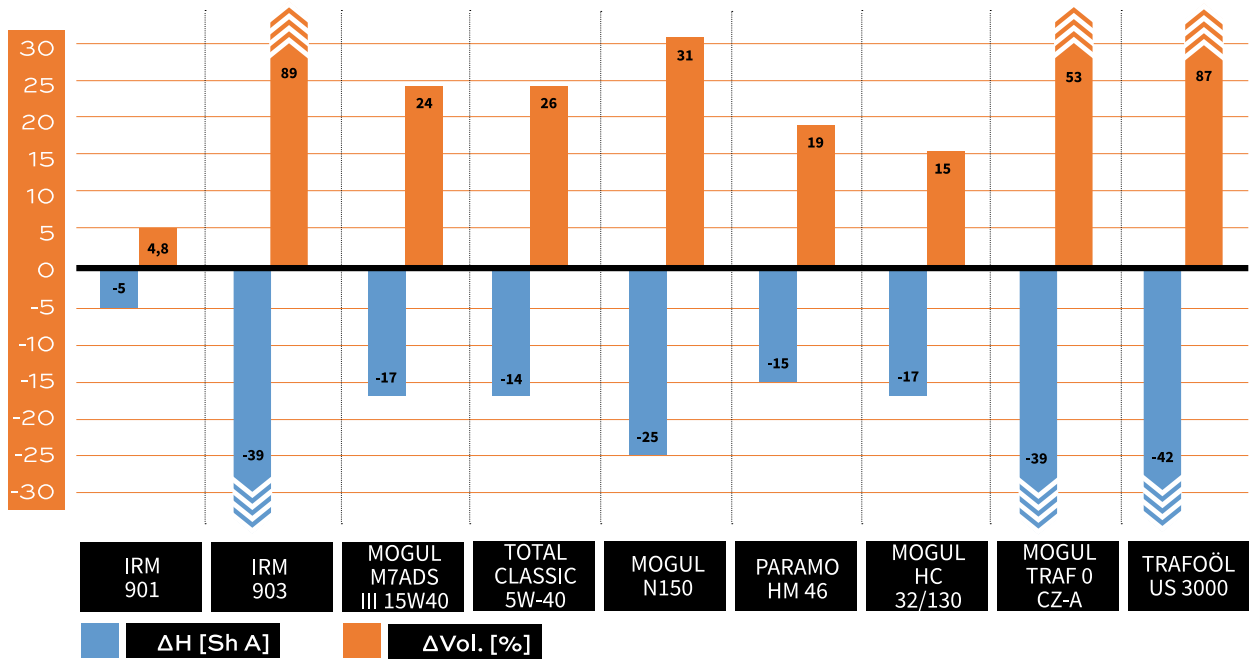
| | |
|---------|-------------|
| 1230 mm | (+/- 10 mm) |
|---------|-------------|

LENGTH

| | |
|------|--------------|
| 10 m | (+/- 200 mm) |
|------|--------------|

RUBBER FLOORING COIN PATTERN OIL-RESISTANT - S8-NBR45

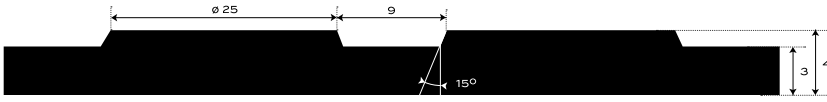
7645 SWELLING RATES



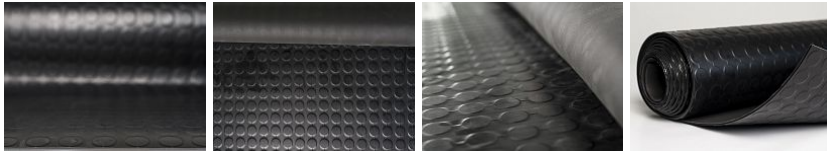
RUBBER FLOORING COIN PATTERN — S8-EPDM96



| | | | |
|-----------------------------|----------------------|------------------|----------------------------------|
| EXTERIOR ENVIRONMENT | 80 +/- 5 Sh A | 4-10 mm | 5.2-12.9 kg/m² |
| | HARDNESS | THICKNESS | BASIS WEIGHT |



Bottom side - cloth impression



ADDITIONAL INFORMATION

Temperature range -40/+100 °C.

RESISTANCE

| | |
|---------------------|------------------|
| Weather resistance | HIGHLY RESISTANT |
| Ozone resistance | HIGHLY RESISTANT |
| UV resistance | HIGHLY RESISTANT |
| Alkaline resistance | HIGHLY RESISTANT |
| Acid resistance | HIGHLY RESISTANT |
| Oil resistance | NO |
| Gasoline resistance | NO |

Rubber roofing for interior and exterior surfaces. Durable and low maintenance with easy handling. With a coin pattern (round stud) type S8, heat-resistant in black color. In standard thickness 4 mm. It weighs 4.9 kg / m². Specify in the configurator.

CONFIGURATION OPTIONS

THICKNESS

| | |
|-------|--------------|
| 4 mm | (+/- 0,3 mm) |
| 5 mm | (+/- 0,5 mm) |
| 6 mm | (+/- 0,5 mm) |
| 8 mm | (+/- 0,6 mm) |
| 10 mm | (+/- 0,6 mm) |

WIDTH

| | |
|---------|-------------|
| 1230 mm | (+/- 10 mm) |
|---------|-------------|

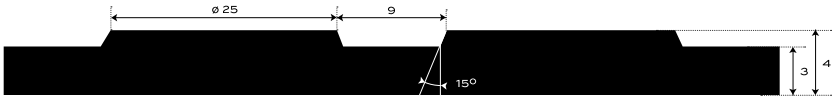
LENGTH

| | |
|------|--------------|
| 10 m | (+/- 200 mm) |
|------|--------------|

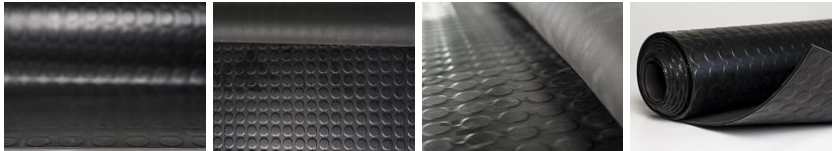
RUBBER FLOORING COIN PATTERN — S8-EPDM95



| | | | |
|-----------------------------|----------------------|------------------|-----------------------------|
| EXTERIOR ENVIRONMENT | 70 +/- 5 Sh A | 4 mm | 5.2 kg/m² |
| | HARDNESS | THICKNESS | BASIS WEIGHT |



Bottom side - cloth impression



ADDITIONAL INFORMATION

Temperature range -40/+100 °C.

RESISTANCE

| | |
|---------------------|------------------|
| Weather resistance | HIGHLY RESISTANT |
| Ozone resistance | HIGHLY RESISTANT |
| UV resistance | HIGHLY RESISTANT |
| Alkaline resistance | HIGHLY RESISTANT |
| Acid resistance | HIGHLY RESISTANT |
| Oil resistance | NO |
| Gasoline resistance | NO |

Rubber roofing for interior and exterior surfaces. Durable and low maintenance with easy handling. With a coin pattern (round stud) type S8, heat-resistant in black color. In standard thickness 4 mm. It weighs 4.9 kg / m2. Specify in the configurator.

CONFIGURATION OPTIONS

| THICKNESS | |
|-----------|--------------|
| 4 mm | (+/- 0,3 mm) |

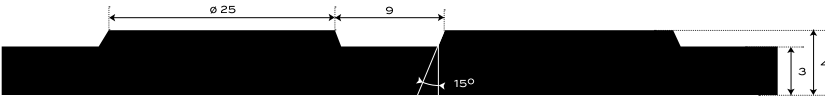
| WIDTH | |
|---------|-------------|
| 1230 mm | (+/- 10 mm) |

| LENGTH | |
|--------|--------------|
| 10 m | (+/- 200 mm) |

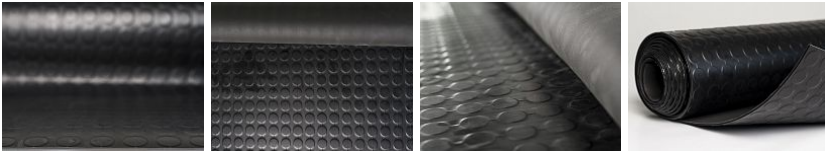
RUBBER FLOORING COIN PATTERN — S8-EPDM15



| | | | |
|-----------------------------|----------------------|------------------|---------------------------|
| EXTERIOR ENVIRONMENT | 60 +/- 5 Sh A | 4 mm | 5 kg/m² |
| | HARDNESS | THICKNESS | BASIS WEIGHT |



Bottom side - cloth impression



ADDITIONAL INFORMATION

Temperature range -40/+125 °C.

RESISTANCE

| | |
|---------------------|------------------|
| Weather resistance | HIGHLY RESISTANT |
| Ozone resistance | HIGHLY RESISTANT |
| UV resistance | HIGHLY RESISTANT |
| Alkaline resistance | HIGHLY RESISTANT |
| Acid resistance | HIGHLY RESISTANT |
| Oil resistance | MEDIUM RESISTANT |
| Gasoline resistance | NO |

Rubber roofing for interior and exterior surfaces. Durable and low maintenance with easy handling. With a coin pattern (round stud) type S8, heat-resistant in black color. In standard thickness 4 mm. It weighs 4.9 kg / m². Specify in the configurator.

CONFIGURATION OPTIONS

THICKNESS

4 mm (+/- 0,3 mm)

WIDTH

1230 mm (+/- 10 mm)

LENGTH

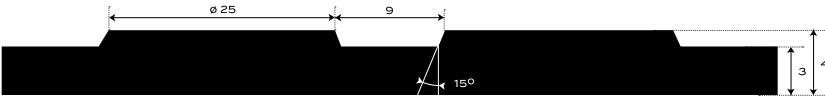
10 m (+/- 200 mm)

S8 — SBR+ Flame
retardant

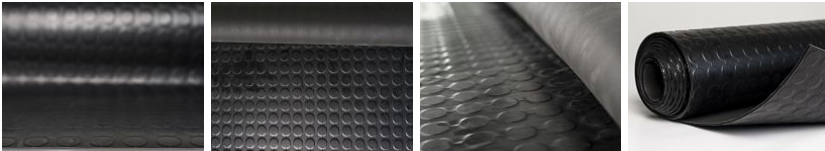
RUBBER FLOORING COIN PATTERN — S8-N



INTERIOR 80 +/- 5 **Sh A** 4 **mm** 5.9 **kg/m²**
ENVIRONMENT **HARDNESS** **THICKNESS** **BASIS WEIGHT**



Bottom side - cloth impression



RESISTANCE

| | |
|--|------------------|
| Flame retardant | YES |
| Abrasion resistance | HIGHLY RESISTANT |
| Weather resistance | NO |
| Ozone resistance | NO |
| UV resistance | NO |
| Alkaline resistance | NO |
| Acid resistance | NO |
| Oil resistance | NO |
| Gasoline resistance | NO |
| Mechanical puncture resistance | YES |
| Test for slip resistance | YES |
| Dielectric tests according given class | YES |
| Ageing tests | YES |
| Low temperature folding test | YES |
| Flame retardance test | YES |
| Oil resistance | YES |
| Acid resistance | YES |

Rubber roofing for interior surfaces. Durable and low maintenance with easy handling. With a coin pattern (round stud) type S8, in black color. This flooring is flame retardant according to EN 13501 C_{fl}-s1. In standard thickness 4 mm. It weighs 5.9 kg / m². Specify in the configurator.

This classification is valid for the following end use conditions: - Flooring laid on the any substrates of reaction to fire class A_{1fl} or A_{2fl}.

CONFIGURATION OPTIONS

| | |
|------------------|--------------|
| THICKNESS | |
| 4 mm | (+/- 0,3 mm) |
| WIDTH | |
| 1230 mm | (+/- 10 mm) |
| LENGTH | |
| 10 m | (+/- 200 mm) |